

Exam simulation

Quiz BPL Gas - Balloon Pilot License - Communication



QuizVds.it

STUDENT NAME:

DATE AND TIME:

01. Which of the following qualities are influenced by stress? 1. Attention 2. Concentration 3. Responsiveness 4. Memory

- a) 2, 4
- b) 1
- c) 1, 2, 3, 4
- d) .1, 2, 3

02. Damages at the basket ropes have to be fixed by:

- a) By the balloon pilot.
- b) Upon the next Aeronautical Recurrence Certification.
- c) By an Approved Aeronautical Workshop.
- d) By tying with a part of a spare rope (during cruise)

03. Under which circumstances is it more likely to accept higher risks?

- a) During check flights due to a high level of nervousness
- b) During flight planning when excellent weather is forecast
- c) Due to group-dynamic effects
- d) If there is not enough information available

04. What conditions are mandatory for the formation of thermal thunderstorms?

- a) Absolutely stable atmosphere, high temperature and high humidity
- b) Absolutely stable atmosphere, high temperature and low humidity
- c) Conditionally unstable atmosphere, high temperature and high humidity
- d) Conditionally unstable atmosphere, low temperature and low humidity

05. Which of the following options states the working principle of a vertical speed indicator?

- a) Measuring the present static air pressure and comparing it to the static air pressure inside a reservoir
- b) Static air pressure is measured and compared against a vacuum
- c) Measuring the vertical acceleration through the displacement of a gimbal-mounted mass
- d) Total air pressure is measured and compared to static pressure

Exam simulation

Quiz BPL Gas - Balloon Pilot License - Communication



QuizVds.it

06. Assume two arbitrary points A and B on the same parallel of latitude, but not on the equator. Point A is located on 010°E and point B on 020°E. The rumb line distance between A and B is always...

- a) More than 300 NM.
- b) Less than 300 NM
- c) Less than 600 NM.
- d) More than 600 NM

07. Doubling the pressure of a dry gas at constant temperature results in a change of the volume to:

- a) Double the previous value
- b) Four times the previous value.
- c) Half the previous value.
- d) A quarter of the previous value.

08. Vienna (LOWW) is located at 016° 34'E, Salzburg (LOWS) at 013° 00'E. The latitude of both positions can be considered as equal. What is the difference of sunrise and sunset times, expressed in UTC, between Wien and Salzburg? (2,00 P.)

- a) In Vienna the sunrise and sunset are about 4 minutes later than in Salzburg
- b) In Vienna the sunrise and sunset are about 14 minutes earlier than in Salzburg
- c) In Vienna the sunrise is 4 minutes later and sunset is 4 minutes earlier than in Salzburg
- d) In Vienna the sunrise is 14 minutes earlier and sunset is 14 minutes later than in Salzburg

09. The vertical extend of air with pressure changing by 1% with 80 m difference in height is referred to as ...

- a) Unstable
- b) Homogene
- c) Stable
- d) Inhomogene

10. What phrase is used by a pilot if a transmission is to be answered with "no"?

- a) Finish
- b) Negative
- c) No
- d) Not

Exam simulation

Quiz BPL Gas - Balloon Pilot License - Communication



QuizVds.it

11. During a flight in colder-than-ISA air the indicated altitude is...

- a) Higher than the true altitude
- b) Equal to the standard altitude.
- c) Lower than the true altitude.
- d) Equal to the true altitude.

12. In which way may an altimeter subscale which is set to an incorrect QNH lead to an incorrect altimeter reading?

- a) If the subscale is set to a higher than actual pressure, the indication is too low. This may lead to much greater heights above the ground than intended
- b) If the subscale is set to a lower than actual pressure, the indication is too high. This may lead to much closer proximity to the ground than intended
- c) If the subscale is set to a lower than actual pressure, the indication is too low. This may lead to much closer proximity to the ground than intended
- d) If the subscale is set to a higher than actual pressure, the indication is too high. This may lead to much closer proximity to the ground than intended

13. What has to be considered before a balloon ride across water surfaces?

- a) A transponder has to be installed and carried aboard
- b) For all people inside the basket life jackets have to be carried aboard
- c) A flight plan with detailed routing has to be filed.
- d) Continuous radio communication has to be established with air traffic control

14. In what case is visibility transmitted in meters?

- a) Up to 10 km
- b) Greater than 10 km
- c) Greater than 5 km
- d) Up to 5 km

15. Which of the following options are possible SSR-Transponder modes?

- a) B, R, S
- b) A, C, S
- c) A, C, R
- d) B, C, V

Exam simulation

Quiz BPL Gas - Balloon Pilot License - Communication



QuizVds.it

16. A wind shear is...

- a) A slow increase of the wind speed in altitudes above 13000 ft
- b) A meteorological downslope wind phenomenon in the alps
- c) A vertical or horizontal change of wind speed and wind direction.
- d) A wind speed change of more than 15 kt.

17. The minimum length of the towing rope is:

- a) 20 m
- b) 50 m
- c) 100 m
- d) 30 m

18. The barometric altimeter with QNH setting indicates...

- a) Height above the pressure level at airfield elevation.
- b) Height above standard pressure 1013.25 hPa.
- c) True altitude above MSL.
- d) Height above MSL.

19. What statement is correct with regard to the density of a gas?

- a) The density increases with increasing temperature and constant volume.
- b) The density decreases with increasing temperature and constant volume.
- c) The density decreases with increasing temperature and constant pressure.
- d) The density decreases with decreasing volume and constant temperature.

20. What is a direct consequence of increase of the carrying gas temperature at a gas balloon with maximum differential pressure?

- a) Climb force decreases.
- b) Weight force increases.
- c) Lift force decreases.
- d) Load-bearing capability increases.

Exam simulation

Quiz BPL Gas - Balloon Pilot License - Communication



QuizVds.it

21. The purpose of the drag lines of the parachute is ...

- a) To transfer the carrying force of the balloon in the top opening area
- b) To transfer the force from the pull rope to the parachute.
- c) To keep the parachute in the center of the top opening.
- d) To transfer the force from the pull rope to the free-balloon hull.

22. How should a landing of a gas balloon be conducted at strong winds?

- a) Drop tow; in sufficient height activate rip panel
- b) Activate rip panel without throwing tow
- c) Drop tow; activate rip panel after ground contact
- d) Drop tow; conduct landing with use of valve

23. Visual illusions are mostly caused by...

- a) Misinterpretation of the brain.
- b) Binocular vision.
- c) Rapid eye movements.
- d) Colour blindness.

24. A gas balloon has to be equipped with which tethers?

- a) 1 at 40 m or 4 at 10 m
- b) 1 at 30 m or 3 at 10 m
- c) 2 at 10 m or 1 at 20 m
- d) 2 at 20 m or 1 at 10 m

25. 1000 ft equal...

- a) 3000 m.
- b) 300 m.
- c) 30 km.
- d) 30 m.

Exam simulation

Quiz BPL Gas - Balloon Pilot License - Communication



QuizVds.it

26. What information is broadcasted on a VOLMET frequency?

- a) Meteorological information
- b) NOTAMS
- c) Navigational information
- d) Current information

27. Which instrument can be affected by the hysteresis error?

- a) Tachometer
- b) Altimeter
- c) Vertical speed indicator
- d) Direct reading compass

28. Where can the type of restriction for a restricted airspace be found?

- a) ICAO chart 1:500000
- b) NOTAM
- c) AIC
- d) AIP

29. What is the correct way to transmit the call sign HB-YKM?

- a) Hotel Bravo Yuliett Kilo Mikro
- b) Home Bravo Yuliett Kilo Mike
- c) Home Bravo Yankee Kilo Mikro
- d) Hotel Bravo Yankee Kilo Mike

30. What is the correct way of acknowledging "You are now entering airspace Delta"?

- a) Entering
- b) Airspace Delta
- c) Wilco
- d) Roger

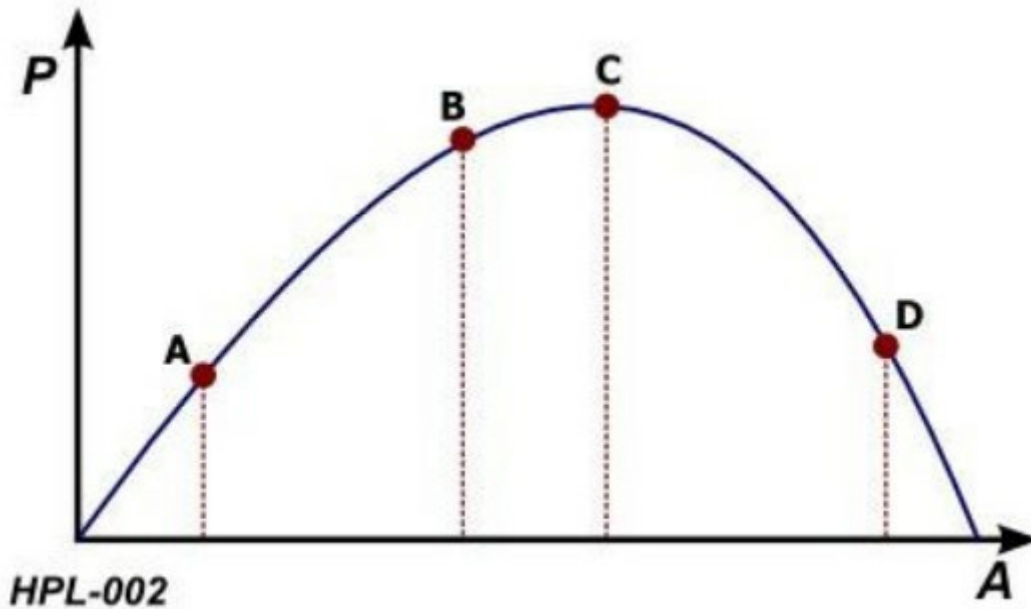
Exam simulation

Quiz BPL Gas - Balloon Pilot License - Communication



QuizVds.it

31. The ideal level of arousal is at which point in the diagram? See figure (HPL- 002) P = Performance A = Arousal / Stress Siehe Anlage 1



- a) Point A
- b) Point C
- c) Point D
- d) Point B

32. While overflying a waypoint, it is stated that a distance of 2 NM has been taken 10 min. What will be the expected time of endurance for the complete distance of 18 NM?

- a) 60 min.
- b) 12 min.
- c) 180 min.
- d) 90 min.

33. Which of the following symptoms may indicate hypoxia?

- a) Blue marks all over the body
- b) Blue discolouration of lips and fingernails
- c) Muscle cramps in the upper body area
- d) Joint pain in knees and feet

Exam simulation

Quiz BPL Gas - Balloon Pilot License - Communication



QuizVds.it

34. The term "runway" is defined as a...

- a) Rectangular area on a land or water aerodrome prepared for the landing and take-off of aircraft.
- b) Rectangular area on a land aerodrome prepared for the landing and take-off of helicopters.
- c) Round area on an aerodrome prepared for the landing and take-off of aircraft.
- d) Rectangular area on a land aerodrome prepared for the landing and take-off of aircraft.

35. The rotational axis of the Earth runs through the...

- a) Geographic North Pole and on the geographic South Pole.
- b) Magnetic north pole and on the magnetic south pole.
- c) Geographic North Pole and on the magnetic south pole.
- d) Magnetic north pole and on the geographic South Pole

36. The vertical speed indicator measures the difference of pressure between...

- a) The present dynamic pressure and the dynamic pressure of a previous moment.
- b) The present total pressure and the total pressure of a previous moment.
- c) The present dynamic pressure and the static pressure of a previous moment
- d) The present static pressure and the static pressure of a previous moment.

37. QFE is the...

- a) Altitude above the reference pressure level 1013.25 hPa.
- b) Magnetic bearing to a station.
- c) Barometric pressure adjusted to sea level, using the international standard atmosphere (ISA).
- d) Barometric pressure at a reference datum, typically the runway threshold of an airfield.

38. The ratio between air pressures at different heights is referred to as:

- a) Height value
- b) Pressure number
- c) Height ratio
- d) Height number

Exam simulation

Quiz BPL Gas - Balloon Pilot License - Communication



QuizVds.it

39. Given the following masses: Empty mass 240 kg Instruments 20 kg per gas container (full): 30 kg per person: 80 kg U which pressure altitude can the balloon climb with 5 persons and 4 gas containers in the basket, assuming temperatures below ISA? (use attachment ECQB-PPL_BPL001) Siehe Anlage 1

Auszug aus dem Flughandbuch



- a) 3000 ft
- b) 17000 ft
- c) 13000 ft
- d) 7000 ft

Exam simulation

Quiz BPL Gas - Balloon Pilot License - Communication



QuizVds.it

40. During a flight in an air mass with a temperature equal to ISA and the QNH set correctly, the indicated altitude is...

- a) Higher than the true altitude.
- b) Lower than the true altitude.
- c) Equal to the standard atmosphere.
- d) Equal to the true altitude

41. The "swiss cheese model" can be used to explain the...

- a) Optimal problem solution
- b) State of readiness of a pilot
- c) Procedure for an emergency landing
- d) Error chain.

42. The standard state of gases refers to which temperature?

- a) 5° C
- b) 0° C
- c) 15° C
- d) 25° C

43. What process results in the formation of "orographic fog" ("hill fog")?

- a) Prolonged radiation during nights clear of clouds
- b) Warm, moist air is moved across a hill or a mountain range
- c) Evaporation from warm, moist ground area into very cold air
- d) Cold, moist air mixes with warm, moist air

44. At time of take-off, ground wind speed is 2 m/s. Along take-off flight path, at a distance of 320 m obstacles erect up to 30 m. What is the minimum rate of climb to keep a clearance of 50 m above the obstacles? (Consider double the ground wind speed for the flight path)

- a) 1 m/s
- b) 1.5 m/s
- c) 2 m/s
- d) 0.5 m/s

Exam simulation

Quiz BPL Gas - Balloon Pilot License - Communication



QuizVds.it

45. What has to be expected during descent above a heated water surface?

- a) The rate of descent decreases.
- b) The horizontal speed decreases.
- c) The horizontal speed increases.
- d) The rate of descent increases.

46. What does a readability of 1 indicate?

- a) The transmission is perfectly readable
- b) The transmission is readable now and then
- c) The transmission is readable but with difficulty
- d) The transmission is unreadable

47. In what situation is it appropriate to set the transponder code 7600?

- a) Hijacking
- b) Loss of radio
- c) Flight into clouds
- d) Emergency

48. An aerodrome beacon (ABN) is a...

- a) Rotating beacon installed at an airport or aerodrome to indicate its location to aircraft pilots from the ground.
- b) Rotating beacon installed at the beginning of the final approach to indicate its location to aircraft pilots from the air.
- c) Fixed beacon installed at an airport or aerodrome to indicate its location to aircraft pilots from the air
- d) Rotating beacon installed at an airport or aerodrome to indicate its location to aircraft pilots from the air.

49. What can be expected for the prevailing wind with isobars on a surface weather chart showing large distances?

- a) Low pressure gradients resulting in low prevailing wind
- b) Strong pressure gradients resulting in strong prevailing wind
- c) Strong pressure gradients resulting in low prevailing wind
- d) Low pressure gradients resulting in strong prevailing wind

Exam simulation

Quiz BPL Gas - Balloon Pilot License - Communication



QuizVds.it

50. Which conditions are likely for the formation of advection fog?

- a) Cold, humid air moves over a warm ocean
- b) Humidity evaporates from warm, humid ground into cold air
- c) Warm, humid air cools during a cloudy night
- d) Warm, humid air moves over a cold surface

51. What change of wind direction can be expected during the passage of a polar front low in Central Europe?

- a) Backing wind during passage of the warm front, veering wind during passage of the cold front
- b) Backing wind during passage of the warm front, backing wind during passage of the cold front
- c) Veering wind during passage of the warm front, backing wind during passage of the cold front
- d) Veering wind during passage of the warm front, veering wind during passage of the cold front

52. What is the percentage of nitrogen in the atmosphere?

- a) 0.1 %
- b) 21 %
- c) 78 %
- d) 1 %

53. During a flight, a flight plan can be filed at the...

- a) Search and Rescue Service (SAR).
- b) Next airport operator en-route.
- c) Flight Information Service (FIS).
- d) Flight Information Service (FIS).

54. While overflying a waypoint, it is stated that a distance of 3 NM has been taken 10 min. What will be the expected time of endurance for the complete distance of 18 NM?

- a) 60 min
- b) 90 min.
- c) 12 min
- d) 180 min.

Exam simulation

Quiz BPL Gas - Balloon Pilot License - Communication



QuizVds.it

55. Under which conditions, no hazards should be expected for a balloon ride?

- a) With high pressure areas before sunset
- b) With an warm front approaching
- c) With an cold front approaching
- d) Close to showers or thunderstorms

56. Which stage of a thunderstorm is dominated by updrafts?

- a) Upwind stage
- b) Cumulus stage
- c) Mature stage
- d) Dissipating stage

57. Which are the different parts of the Aeronautical Information Publication (AIP)?

- a) GEN ENR AD
- b) GEN MET RAC
- c) GEN COM MET
- d) GEN AGA COM

Exam simulation

Quiz BPL Gas - Balloon Pilot License - Communication



QuizVds.it

58. Given the following masses: Empty mass 260 kg Instruments 20 kg per gas container (full): 30 kg per person: 80 kg Assuming ISA temperatures, how many persons may be carried in the basket at maximum, if the balloon with 4 gas containers has to climb up to pressure altitude 9.000 ft ? (use attachment ECQB-PPL_BPL001) Siehe Anlage 1

Auszug aus dem Flughandbuch



- a) 4
- b) 5
- c) 2
- d) 3

Exam simulation

Quiz BPL Gas - Balloon Pilot License - Communication



QuizVds.it

59. Before buildup, the buildup team has to be informed about correct behaviour at sudden critical situations how?

- a) Only at gusty winds
- b) Twice
- c) At least two days before
- d) By the balloon pilot

60. The term ,magnetic course' (MC) is defined as...

- a) The angle between true north and the course line.
- b) The direction from an arbitrary point on Earth to the magnetic north pole.
- c) The direction from an arbitrary point on Earth to the geographic North Pole.
- d) The angle between magnetic north and the course line.

61. Aerostatic lift, amongst other factors, depends on...

- a) On the speed.
- b) Balloon mass.
- c) Shape of the envelope.
- d) Air density.

62. What is the meaning of an area marked as "TMZ"?

- a) Touring Motorglider Zone
- b) Traffic Management Zone
- c) Transponder Mandatory Zone
- d) Transportation Management Zone

63. What is the purpose of "interception lines" in visual navigation?

- a) They are used as easily recognizable guidance upon a possible loss of orientation
- b) To visualize the range limitation from the departure aerodrome
- c) They help to continue the flight when flight visibility drops below VFR minima
- d) To mark the next available en-route airport during the flight





Exam simulation

Quiz BPL Gas - Balloon Pilot License - Communication



QuizVds.it

64. (For this question, please use annex PFP-062) According ICAO, what symbol indicates a civil airport (not international airport) with paved runway? Siehe Anlage 6

- A 
- B 
- C 
- D 

PFP-062

- a) C
- b) B
- c) D
- d) A

65. The character of an air mass is given by what properties?

- a) Wind speed and tropopause height
- b) Environmental lapse rate at origin
- c) Temperatures at origin and present region
- d) Region of origin and track during movement

66. In a METAR, "(moderate) showers of rain" are designated by the identifier...

- a) .+TSRA.
- b) TS.
- c) SHRA.
- d) .+RA.

Exam simulation

Quiz BPL Gas - Balloon Pilot License - Communication



QuizVds.it

67. Which of the stated surfaces will reduce the wind speed most due to ground friction?

- a) Flat land, lots of vegetation cover
- b) Oceanic areas
- c) Mountainous areas, vegetation cover
- d) Flat land, deserted land, no vegetation

68. What is the minimum flight visibility in airspace "C" below FL 100 for an aircraft operating under VFR?

- a) 5 km
- b) 1.5 km
- c) 10 km
- d) 8 km

69. What is the meaning of the abbreviation "ARC"?

- a) Airspace Restriction Criteria
- b) Airworthiness Recurring Control
- c) Airworthiness Review Certificate
- d) Airspace Rulemaking Committee

70. What visual flight conditions can be expected after the passage of a cold front?

- a) Poor visibility, formation of overcast or ground-covering stratus clouds, snow
- b) Medium visibility with lowering cloud bases, onset of prolonged precipitation
- c) Good visibility, formation of cumulus clouds with showers of rain or snow
- d) Scattered cloud layers, visibility more than 5 km, formation of shallow cumulus clouds

Exam simulation

Quiz BPL Gas - Balloon Pilot License - Communication



QuizVds.it

Response Scheme

Compare your answers with the following diagram and mark your score!

01: C	02: C	03: C	04: C
05: A	06: C	07: C	08: B
09: B	10: B	11: A	12: D
13: B	14: D	15: B	16: C
17: D	18: D	19: C	20: D
21: B	22: A	23: A	24: C
25: B	26: A	27: B	28: D
29: D	30: D	31: D	32: D
33: B	34: D	35: A	36: D
37: D	38: D	39: B	40: D
41: C	42: D	43: B	44: A
45: D	46: D	47: B	48: D
49: A	50: D	51: D	52: C
53: C	54: A	55: A	56: B
57: A	58: A	59: D	60: D
61: D	62: C	63: A	64: D
65: D	66: C	67: C	68: A
69: C	70: C		

Exam simulation

Quiz BPL Gas - Balloon Pilot License - Communication



QuizVds.it

Response form

Use this form to mark your answers

01: _____	02: _____	03: _____	04: _____
05: _____	06: _____	07: _____	08: _____
09: _____	10: _____	11: _____	12: _____
13: _____	14: _____	15: _____	16: _____
17: _____	18: _____	19: _____	20: _____
21: _____	22: _____	23: _____	24: _____
25: _____	26: _____	27: _____	28: _____
29: _____	30: _____	31: _____	32: _____
33: _____	34: _____	35: _____	36: _____
37: _____	38: _____	39: _____	40: _____
41: _____	42: _____	43: _____	44: _____
45: _____	46: _____	47: _____	48: _____
49: _____	50: _____	51: _____	52: _____
53: _____	54: _____	55: _____	56: _____
57: _____	58: _____	59: _____	60: _____
61: _____	62: _____	63: _____	64: _____
65: _____	66: _____	67: _____	68: _____
69: _____	70: _____		