

Exam simulation

Quiz BPL Hot Air - Balloon Pilot License - Air Law



QuizVds.it

STUDENT NAME:

DATE AND TIME:

01. When do you expect wind shear?

- a) When passing a warm front
- b) During a summer day with calm winds
- c) During an inversion
- d) In calm wind in cold weather

02. What is the correct way to transmit the call sign HB-YKM?

- a) Hotel Bravo Yuliett Kilo Mikro
- b) Home Bravo Yuliett Kilo Mike
- c) Home Bravo Yankee Kilo Mikro
- d) Hotel Bravo Yankee Kilo Mike

03. The shown NOTAM is valid until... A) 1024/13 A) LOWW B) 1305211200 C) 1305211400 E) STOCKERAU VOR STO 113.00 UNSERVICEABLE.

- a) 21/05/2014 13:00 UTC.
- b) 13/05/2013 12:00 UTC.
- c) 13/10/2013 00:00 UTC.
- d) 13/10/2013 00:00 UTC.

04. QFE is the...

- a) Magnetic bearing to a station
- b) Barometric pressure at a reference datum, typically the runway threshold of an airfield.
- c) Barometric pressure adjusted to sea level, using the international standard atmosphere (ISA).
- d) Altitude above the reference pressure level 1013.25 hPa.

Exam simulation

Quiz BPL Hot Air - Balloon Pilot License - Air Law



QuizVds.it

**05. (For this question, please use annex PFP-063) According ICAO, what symbol indicates a general spot elevation?
Siehe Anlage 7**

- A 300
- B (300)
- C • 1737
- D • 1737

PFP-063

- a) D
- b) B
- c) A
- d) C

06. The altimeter's reference scale is set to airfield pressure (QFE). What indication is shown during the flight?

- a) Pressure altitude
- b) Altitude above MSL
- c) Airfield elevation
- d) Height above airfield

07. Which dangerous attitudes are often combined?

- a) Impulsivity and carefulness
- b) Macho and invulnerability
- c) Self-abandonment and macho
- d) Invulnerability and self-abandonment

Exam simulation

Quiz BPL Hot Air - Balloon Pilot License - Air Law



QuizVds.it

08. The main burner is fed by which phase?

- a) By the low-pressure phase
- b) By the gas phase
- c) By the plasma phase
- d) By the liquid phase

09. Air consists of oxygen, nitrogen and other gases. What is the approximate percentage of other gases?

- a) 1 %
- b) 21 %
- c) 0.1 %
- d) 78 %

10. What does a readability of 5 indicate?

- a) The transmission is perfectly readable
- b) The transmission is readable but with difficulty
- c) The transmission is unreadable
- d) The transmission is readable now and then

11. When using a GPS for tracking to the next waypoint, a deviation indication is shown by a vertical bar and dots to the left and to the right of the bar. What statement describes the correct interpretation of the display?

- a) The deviation of the bar from the center indicates the track error as absolute distance in NM; the scale for full deflection is ± 10 NM
- b) The deviation of the bar from the center indicates the track error as angular distance in degrees; the scale for full deflection depends on the operating mode of the GPS.
- c) The deviation of the bar from the center indicates the track error as angular distance in degrees; the scale for full deflection is $\pm 10^\circ$
- d) The deviation of the bar from the center indicates the track error as absolute distance in NM; the scale for full deflection depends on the operating mode of the GPS.

12. Which wind system may be dangerous for balloon rides in the Alps?

- a) Bora
- b) Scirocco
- c) Mistra
- d) Foehn

Exam simulation

Quiz BPL Hot Air - Balloon Pilot License - Air Law



QuizVds.it

13. Which direction corresponds to 'compass north' (CN)?

- a) The most northerly part of the magnetic compass in the aircraft, where the reading takes place
- b) The direction from an arbitrary point on Earth to the geographical North Pole
- c) The angle between the aircraft heading and magnetic north
- d) The direction to which the direct reading compass aligns due to earth's and aircraft's magnetic fields

14. A boundary between a cold polar air mass and a warm subtropical air mass showing no horizontal displacement is called...

- a) Warm front.
- b) Occluded front.
- c) Cold front.
- d) Stationary front.

15. What is the meaning of a steady green light signal at a controlled aerodrome directed to an aircraft in flight?

- a) Airport unsafe, do not land
- b) Return for landing, followed by steady green at the appropriate time
- c) Cleared to land
- d) Give way to other aircraft and continue circling

16. A vertical speed indicator connected to a too big equalizing tank results in...

- a) Indication too high
- b) No indication
- c) Indication too low
- d) Mechanical overload

17. The majority of aviation accidents are caused by...

- a) Human failure
- b) Technical failure
- c) Geographical influences.
- d) Meteorological influences.

Exam simulation

Quiz BPL Hot Air - Balloon Pilot License - Air Law



QuizVds.it

18. Which of the following statements is correct?

- a) At higher altitude, sink rate in case of cooling is increased due to less drag by less density.
- b) At higher altitude, sink rate by cooling is not increased because due to low density the mass inside the hull is also less.
- c) Higher drag at higher altitude prevents increased sink rate in case of cooling.
- d) Maximum sink rate must be equal at all altitudes as prescribed by design regulations.

19. What is the minimum flight visibility in airspace "E" for an aircraft operating under VFR at FL75?

- a) 1500 m
- b) 8000 m
- c) 3000 m
- d) 5000 m

20. What has to be considered when entering an RMZ?

- a) To obtain a clearance to enter this area
- b) The transponder has to be switched on Mode C and squawk 7000
- c) To permanently monitor the radio and if possible to establish radio contact
- d) To obtain a clearance from the local aviation authority

21. The term 'agonic line' is defined as a line on Earth or an aeronautical chart, connecting all points with the...

- a) Deviation of 0°.
- b) Inclination of 0°.
- c) Heading of 0°.
- d) Variation of 0°.

22. At time of take-off, ground wind speed is 3 m/s. Along take-off flight path, at a distance of 360 m obstacles erect up to 40 m. What is the minimum rate of climb to keep a clearance of 50 m above the obstacles? (Consider double the ground wind speed for the flight path)

- a) 1 m/s
- b) 2 m/s
- c) 0.5 m/s
- d) 1.5 m/s

Exam simulation

Quiz BPL Hot Air - Balloon Pilot License - Air Law



QuizVds.it

23. What are primary criteria for selecting a landing site? 1. Obstacle situation 2. Elevation of the site 3. Strength of surface wind

- a) 2 and 3
- b) 1, 2 and 3
- c) 1 and 2
- d) 1 and 3

24. On what frequency shall a blind transmission be made?

- a) On a tower frequency
- b) On a radar frequency of the lower airspace
- c) On the appropriate FIS frequency
- d) On the current frequency

25. Aerostatic lift, amongst other factors, depends on...

- a) Shape of the envelope.
- b) On the speed.
- c) Balloon mass.
- d) Air density.

26. What action has to be taken by the pilot of a hot-air balloon in case of fire on the ground? First action is to ...

- a) Make an emergency call via radio
- b) Leave from the area surrounding the burner
- c) Close the valves of the gas containers.
- d) Engage the fire extinguishers.

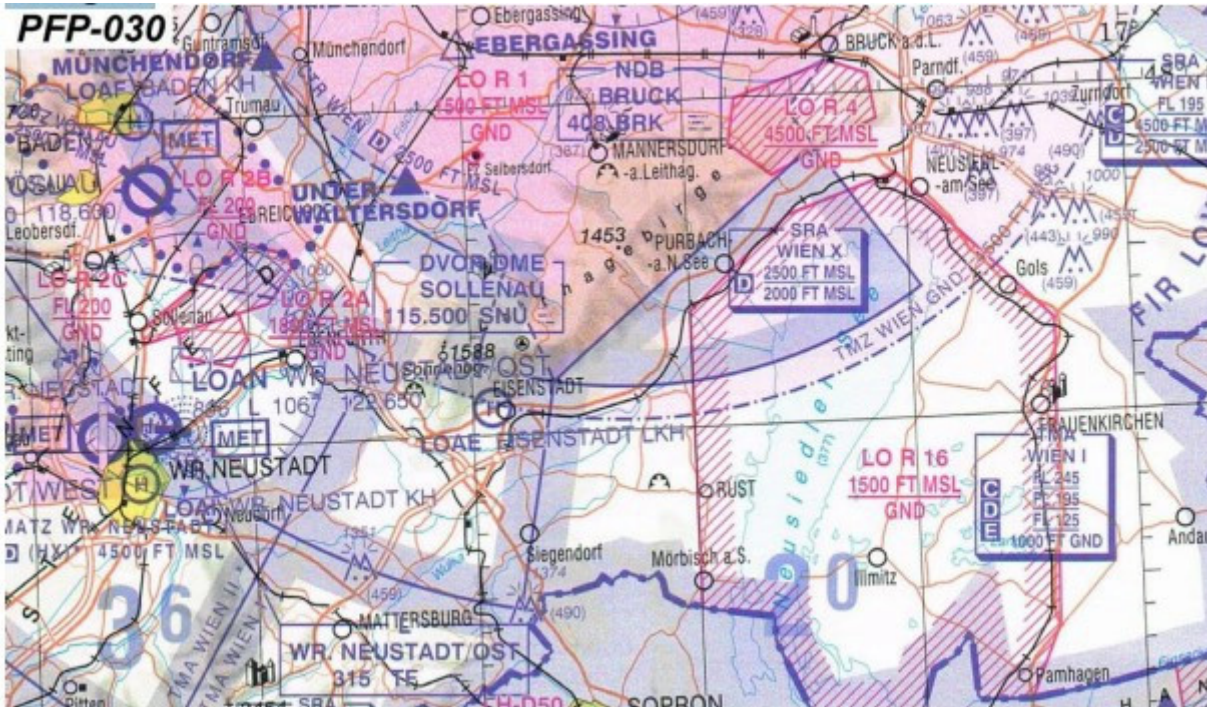
Exam simulation

Quiz BPL Hot Air - Balloon Pilot License - Air Law



QuizVds.it

27. The upper limit of LO R 4 equals... See annex (PFP-030) Siehe Anlage 3



- a) 1.500 ft MSL.
- b) 1.500 ft AGL.
- c) 4.500 ft MSL.
- d) 4.500 ft AGL.

28. In what different ways can a risk be handled appropriately?

- a) Avoid, ignore, palliate, reduce
- b) Extrude, avoid, palliate, transfer
- c) Ignore, accept, transfer, extrude
- d) Avoid, reduce, transfer, accept

29. What factors are required for the formation of precipitation in clouds?

- a) High humidity and high temperatures
- b) The presence of an inversion layer
- c) Calm winds and intensive sunlight insolation
- d) Moderate to strong updrafts

Exam simulation

Quiz BPL Hot Air - Balloon Pilot License - Air Law



QuizVds.it

30. An inversion is a layer ...

- a) With increasing pressure with increasing height.
- b) With increasing temperature with increasing height
- c) With constant temperature with increasing height.
- d) With decreasing temperature with increasing height.

31. What ground features should preferably be used for orientation during visual flight?

- a) Power lines
- b) Rivers, railroads, highways
- c) Border lines
- d) Farm tracks and creeks

32. What is the approximate speed of electromagnetic wave propagation?

- a) 300000 m/s
- b) 123000 m/s
- c) 300000 km/s
- d) 123000 km/s

33. The term 'True Course' (TC) is defined as...

- a) The direction from an arbitrary point on Earth to the geographic North Pole.
- b) The angle between true north and the course line
- c) The angle between magnetic north and the course line.
- d) The direction from an arbitrary point on Earth to the magnetic north pole.

34. What statement is correct with regard to the density of a gas?

- a) The density increases with increasing temperature and constant volume.
- b) The density decreases with decreasing volume and constant temperature.
- c) The density decreases with increasing temperature and constant volume.
- d) The density decreases with increasing temperature and constant pressure.

Exam simulation

Quiz BPL Hot Air - Balloon Pilot License - Air Law

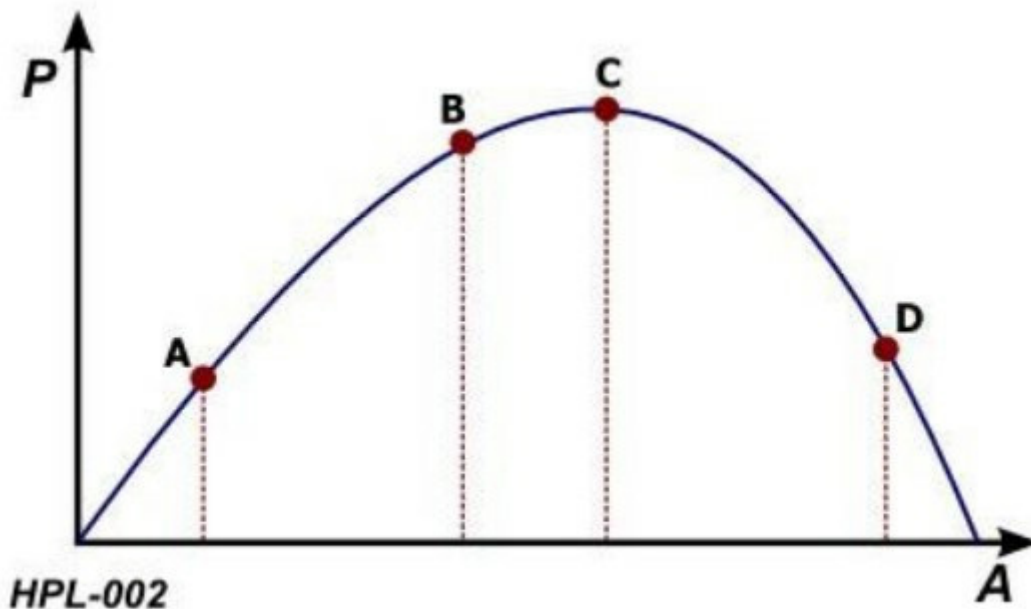


QuizVds.it

35. Changing the shape of the envelope of a free balloon, e.g. by a gust, results in:

- a) Increase in lift.
- b) Decrease in volume
- c) Increase of displaced air.
- d) Decrease in weight.

36. At which point in the diagram will a pilot find himself to be overstrained? See figure (HPL-002) P = Performance A = Arousal / Stress Siehe Anlage 1



- a) Point B
- b) Point D
- c) Point C
- d) Point A

37. After take-off with a balloon, obstacles at a distance of 300 m erect in expected flight path up to 40 m height. Rate of climb is expected with 1.5 m/s. What maximum actual wind speed can be accepted to maintain a clearance of 50 m above obstacles, assuming double the actual wind speed for calculation?

- a) 8 m/s
- b) 2.5 m/s
- c) 10 m/s
- d) 1 m/s

Exam simulation

Quiz BPL Hot Air - Balloon Pilot License - Air Law



QuizVds.it

38. A pilot burner which is fed by the gas phase, works by which principle?

- a) Electrostatic principle.
- b) Bunsen principle
- c) Aerostatic principle.
- d) Aerodynamic principle

39. The increase in load carrying capability by increasing the hull air temperature by the same temperature difference ...

- a) Increases with balloon mass.
- b) Increases with altitude.
- c) Decreases with sinking.
- d) Decreases with altitude.

40. Which phrase is to be used when a pilot wants the tower to know that he is ready for take-off?

- a) Ready for start-up
- b) Ready for departure
- c) Ready
- d) Request take-off

41. Which transponder code should be set during a radio failure without any request?

- a) 7000
- b) 7500
- c) 7700
- d) 7600

42. The term "tropopause" is defined as...

- a) The layer above the troposphere showing an increasing temperature.
- b) The height above which the temperature starts to decrease.
- c) The boundary area between the mesosphere and the stratosphere.
- d) The boundary area between the troposphere and the stratosphere.

Exam simulation

Quiz BPL Hot Air - Balloon Pilot License - Air Law



QuizVds.it

43. For what approximate time period can the short-time memory store information?

- a) 10 to 20 seconds
- b) 3 to 7 seconds
- c) 30 to 40 seconds
- d) 35 to 50 seconds

44. Where does the inclination reach its lowest value?

- a) At the geographic equator
- b) At the magnetic poles
- c) At the magnetic equator
- d) At the geographic poles

45. In case of a water landing, when should the life jackets be inflated?

- a) After landing, still in the basket, if leaving the basket has to be expected.
- b) During cruise over water.
- c) After leaving the basket.
- d) Before touchdown on water surface.

Exam simulation

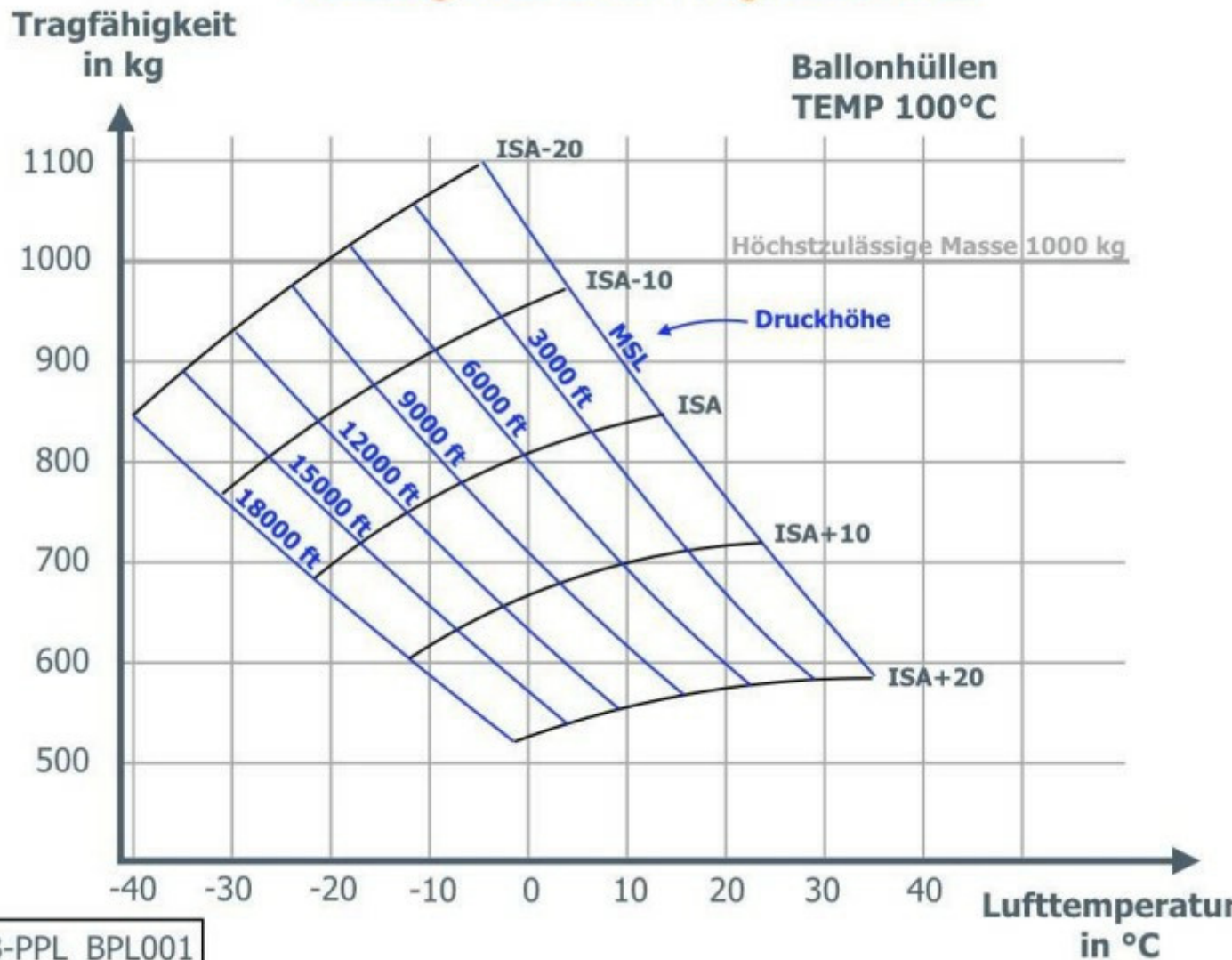
Quiz BPL Hot Air - Balloon Pilot License - Air Law



QuizVds.it

46. Given the following masses: Empty mass 260 kg Instruments 20 kg per gas container (full): 30 kg per person: 80 kg Assuming temperature ISA+10, how many persons may be carried in the basket at maximum, if the balloon with 4 gas containers has to climb up to pressure altitude 12.000 ft ? (use attachment ECQB-PPL_BPL001) Siehe Anlage 1

Auszug aus dem Flughandbuch



- a) 3
- b) 5
- c) 4
- d) 2

Exam simulation

Quiz BPL Hot Air - Balloon Pilot License - Air Law



QuizVds.it

47. The altimeter has to be set to what value in order to show zero on ground?

- a) QNH
- b) QTE
- c) QFE
- d) QNE

48. Which are the properties of a Mercator chart?

- a) The scales increases with latitude, great circles are depicted as curved lines, rhumb lines are depicted as straight lines
- b) The scale is constant, great circles are depicted as curved lines, rhumb lines are depicted as straight lines
- c) The scales increases with latitude, great circles are depicted as straight lines, rhumb lines are depicted as curved lines
- d) The scale is constant, great circles are depicted as straight lines, rhumb lines are depicted as curved lines

49. How do dew point and relative humidity change with decreasing temperature?

- a) Dew point increases, relative humidity decreases
- b) Dew point remains constant, relative humidity decreases
- c) Dew point remains constant, relative humidity increases
- d) Dew point decreases, relative humidity increases

50. Which factor can lead to human error?

- a) Double check of relevant actions
- b) To be doubtful if something looks unclear or ambiguous
- c) The bias to see what we expect to see
- d) Proper use of checklists

51. The vapour pressure of propane gas in a bottle depends in particular on:

- a) The rigidity of the bottle.
- b) The size of the bottle.
- c) The temperature.
- d) The gas amount.

Exam simulation

Quiz BPL Hot Air - Balloon Pilot License - Air Law



QuizVds.it

52. At high altitude, the complete heating system of a hot-air balloon fails. What maximum rate of descent has to be expected upon reaching ground?

- a) Approximately 2.5 m/s
- b) Approximately 4.5 m/s
- c) Approximately 6.5 m/s
- d) Approximately 2.5 m/s

53. The force resulting from the (positive) difference from load-bearing capacity and weight force, is referred to as:

- a) Upper force
- b) Lift force
- c) Load force
- d) Climb force

54. Liquifaction of propane gas results in a reduction in volume to what fraction of the gas volume?

- a) 1/160
- b) 1/260
- c) 1/360
- d) 1/60

55. Doubling the pressure of a dry gas at constant temperature results in a change of the volume to:

- a) Double the previous value.
- b) Half the previous value.
- c) Four times the previous value.
- d) A quarter of the previous value.

56. Which transponder code has to be set unrequested during an emergency?

- a) 7700
- b) 7500
- c) 7600
- d) 7000

Exam simulation

Quiz BPL Hot Air - Balloon Pilot License - Air Law



QuizVds.it

57. What is the great circle distance between two points A and B on the equator when the difference between the two associated meridians is exactly one degree of longitude?

- a) 60 NM
- b) 216 NM
- c) 400 NM
- d) 120 NM

58. Which of the following options states the working principle of a vertical speed indicator?

- a) Total air pressure is measured and compared to static pressure
- b) Static air pressure is measured and compared against a vacuum
- c) Measuring the present static air pressure and comparing it to the static air pressure inside a reservoir
- d) Measuring the vertical acceleration through the displacement of a gimbal-mounted mass

59. Wake turbulence is particularly strong...

- a) When flying at high speeds.
- b) When flying at low altitudes.
- c) When flying at low speeds.
- d) When flying at high altitudes.

60. What should be considered regarding a scheduled flight over water, when land cannot be reached in case of an emergency landing?

- a) Contact to the nearest ATC shall consist during the whole flight
- b) The flight plan has to contain the exact waypoints
- c) For all passengers there must be life jackets or lifeboats present
- d) Transponder code 7600 has to be set during the whole flight

61. What is the purpose of "interception lines" in visual navigation?

- a) They are used as easily recognizable guidance upon a possible loss of orientation
- b) To visualize the range limitation from the departure aerodrome
- c) They help to continue the flight when flight visibility drops below VFR minima
- d) To mark the next available en-route airport during the flight

Exam simulation

Quiz BPL Hot Air - Balloon Pilot License - Air Law



QuizVds.it

62. What has to be expected when diving into an inversion layer from above?

- a) Rate of descent increases
- b) Rate of descent decreases.
- c) Sudden drop onto the ground.
- d) Uncontrollable oscillation of the basket.

63. What is referred to as mountain wind?

- a) Wind blowing uphill from the valley during daytime
- b) Wind blowing uphill from the valley during the night.
- c) Wind blowing down the mountain side during daytime
- d) Wind blowing down the mountain side during the night

64. Why has a secondary ignition source be available during a ride with a hot-air balloon?

- a) As an emergency lighting during night.
- b) To check seals of hose connections during darkness.
- c) To provide light signals by a camping fire after an emergency landing.
- d) To re-ignite the burner or pilot flames after flameout.

65. What is the purpose of the sounding pipe valve?

- a) It allows pressure equalization during cruise at high altitude
- b) To indicate the volumetric filling limit.
- c) It prevents air from entering the burner system
- d) For venting the liquid gas container bottle.

66. Which of the following options are possible SSR-Transponder modes?

- a) B, R, S
- b) A, C, S
- c) A, C, R
- d) B, C, V

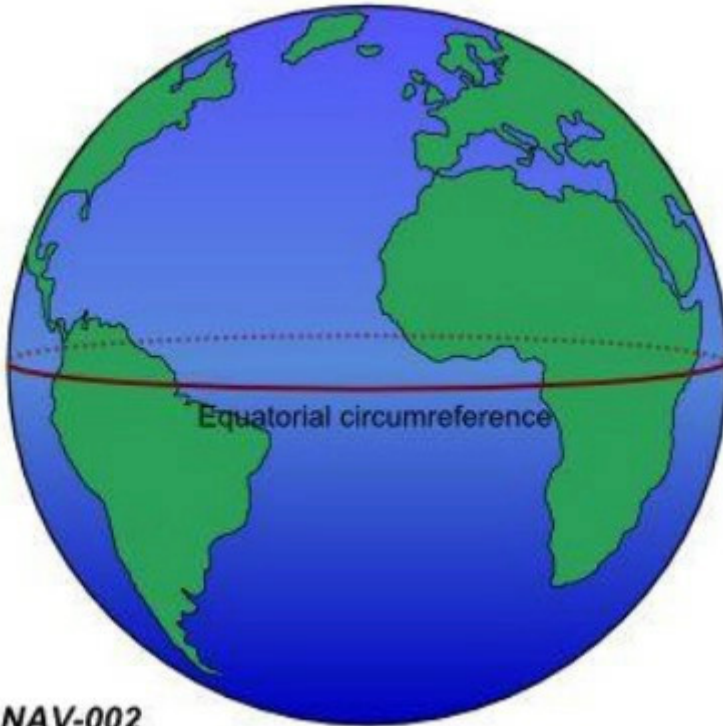
Exam simulation

Quiz BPL Hot Air - Balloon Pilot License - Air Law



QuizVds.it

67. The circumference of the Earth at the equator is approximately... See figure (NAV-002) Siehe Anlage 1



- a) 40000 NM.
- b) 12800 km.
- c) 10800 km.
- d) 21600 NM.

68. The term "static pressure" is defined as pressure...

- a) Of undisturbed airflow.
- b) Sensed by the pitot tube
- c) Inside the airplane cabin.
- d) Resulting from orderly flow of air particles.

69. What is the correct term for a message used for air traffic control?

- a) Flight safety message
- b) Flight regularity message
- c) Message related to direction finding
- d) Meteorological message

Exam simulation

Quiz BPL Hot Air - Balloon Pilot License - Air Law



QuizVds.it

70. What is the difference in latitude between A (12°53'30"N) and B (07°34'30"S)?

- a) 05°19'00"
- b) 20°28'00"
- c) 20,28°
- d) 05,19°

Exam simulation

Quiz BPL Hot Air - Balloon Pilot License - Air Law



QuizVds.it

Response Scheme

Compare your answers with the following diagram and mark your score!

01: C	02: D	03: D	04: B
05: D	06: D	07: B	08: D
09: A	10: A	11: D	12: D
13: D	14: D	15: C	16: A
17: A	18: A	19: D	20: C
21: D	22: D	23: D	24: D
25: D	26: C	27: C	28: D
29: D	30: B	31: B	32: C
33: B	34: D	35: B	36: B
37: B	38: B	39: D	40: B
41: D	42: D	43: A	44: C
45: C	46: A	47: C	48: A
49: C	50: C	51: C	52: C
53: D	54: B	55: B	56: A
57: A	58: C	59: C	60: C
61: A	62: B	63: D	64: D
65: B	66: B	67: D	68: A
69: A	70: B		

Exam simulation

Quiz BPL Hot Air - Balloon Pilot License - Air Law



QuizVds.it

Response form

Use this form to mark your answers

01: _____	02: _____	03: _____	04: _____
05: _____	06: _____	07: _____	08: _____
09: _____	10: _____	11: _____	12: _____
13: _____	14: _____	15: _____	16: _____
17: _____	18: _____	19: _____	20: _____
21: _____	22: _____	23: _____	24: _____
25: _____	26: _____	27: _____	28: _____
29: _____	30: _____	31: _____	32: _____
33: _____	34: _____	35: _____	36: _____
37: _____	38: _____	39: _____	40: _____
41: _____	42: _____	43: _____	44: _____
45: _____	46: _____	47: _____	48: _____
49: _____	50: _____	51: _____	52: _____
53: _____	54: _____	55: _____	56: _____
57: _____	58: _____	59: _____	60: _____
61: _____	62: _____	63: _____	64: _____
65: _____	66: _____	67: _____	68: _____
69: _____	70: _____		