

Exam simulation

Quiz BPL Hot Air - Balloon Pilot License - Operational Procedures



QuizVds.it

STUDENT NAME:

DATE AND TIME:

01. An inversion layer close to the ground can be caused by...

- a) Ground cooling during the night.
- b) Large-scale lifting of air.
- c) Thickening of clouds in medium layers
- d) Intensifying and gusting winds.

02. What is the minimum flight visibility in airspace "C" below FL 100 for an aircraft operating under VFR?

- a) 5 km
- b) 1.5 km
- c) 10 km
- d) 8 km

03. What is the correct way of acknowledging the instruction "Next report PAH"?

- a) Wilco
- b) Positive
- c) Roger
- d) Report PAH

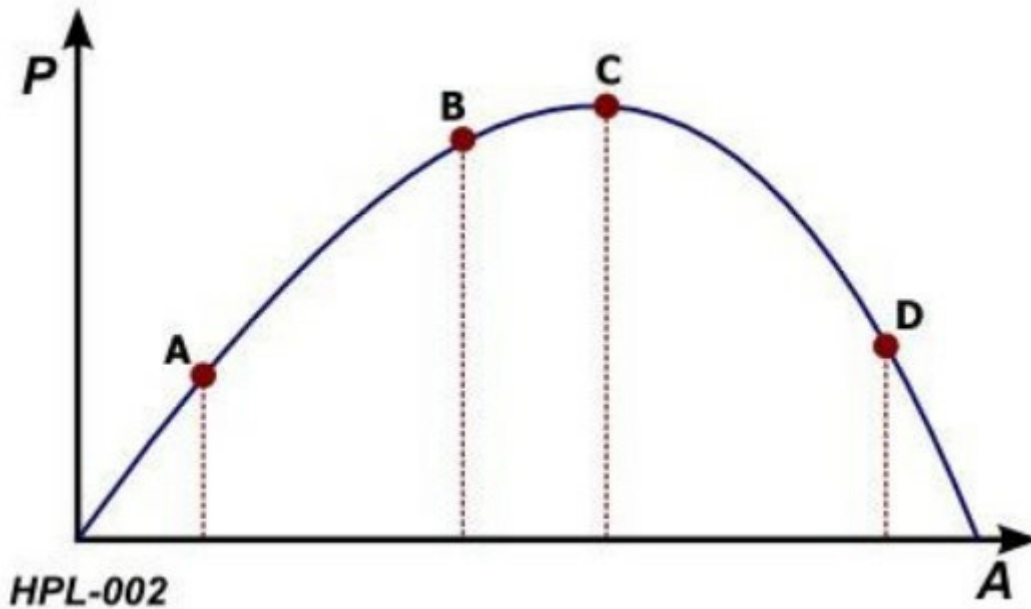
Exam simulation

Quiz BPL Hot Air - Balloon Pilot License - Operational Procedures



QuizVds.it

04. At which point in the diagram will a pilot find himself to be overstrained? See figure (HPL-002) P = Performance
A = Arousal / Stress Siehe Anlage 1



- a) Point B
- b) Point D
- c) Point C
- d) Point A

05. Which phrase is used by a pilot when he wants to fly through controlled airspace?

- a) Apply
- b) Want
- c) Request
- d) Would like

06. The ongoing process to monitor the current flight situation is called...

- a) Anticipatory check procedure.
- b) Situational thinking.
- c) Constant flight check.
- d) Situational awareness.

Exam simulation

Quiz BPL Hot Air - Balloon Pilot License - Operational Procedures



QuizVds.it

**07. (For this question, please use annex PFP-063) According ICAO, what symbol indicates a general spot elevation?
Siehe Anlage 7**

- A 300
- B (300)
- C • 1737
- D • 1737

PFP-063

- a) D
- b) B
- c) A
- d) C

08. What is the call sign of the surface movement control?

- a) Earth
- b) Ground
- c) Tower
- d) Control

09. While overflying a waypoint, it is stated that a distance of 3 NM has been taken 10 min. What will be the expected time of endurance for the complete distance of 18 NM?

- a) 60 min.
- b) 90 min.
- c) 12 min.
- d) 180 min.

Exam simulation

Quiz BPL Hot Air - Balloon Pilot License - Operational Procedures



QuizVds.it

10. What is the mass of a "cube of air" with the edges 1 m long, at MSL according ISA?

- a) 0,1225 kg
- b) 12,25 kg
- c) 0,01225 kg
- d) 1,225 kg

11. Before buildup, the buildup team has to be informed about correct behaviour at sudden critical situations how?

- a) Only at gusty winds
- b) At least two days before
- c) By the balloon pilot
- d) Twice

12. The vertical speed indicator measures the difference of pressure between...

- a) The present dynamic pressure and the static pressure of a previous moment.
- b) The present total pressure and the total pressure of a previous moment.
- c) The present dynamic pressure and the dynamic pressure of a previous moment.
- d) The present static pressure and the static pressure of a previous moment.

13. Given: TC: 179°; WCA: -12°; VAR: 004° E; DEV: +002° What are MH and MC?

- a) MH: 167°. MC: 175°.
- b) MH: 167°. MC: 161°.
- c) MH: 163°. MC: 175°.
- d) MH: 163°. MC: 161°.

14. An altitude of 4500 ft is transmitted as...

- a) Four five zero zero
- b) Four thousand five zero zero.
- c) Four five thousand.
- d) Four thousand five hundred.

Exam simulation

Quiz BPL Hot Air - Balloon Pilot License - Operational Procedures



QuizVds.it

15. While overflying a waypoint, it is stated that a distance of 3 NM has been taken 10 min. What will be the expected time of endurance for the remaining distance of 18 NM?

- a) 60 min.
- b) 12 min
- c) 90 min.
- d) 180 min.

16. What has to be expected during descent above a heated water surface?

- a) The rate of descent increases.
- b) The rate of descent decreases
- c) The horizontal speed increases.
- d) The horizontal speed decreases.

17. What is the correct frequency for an initial distress message?

- a) FIS frequency
- b) Radar frequency
- c) Current frequency
- d) Emergency frequency

18. Distress messages contain...

- a) Information concerning the safety of an aircraft, a watercraft or some other vehicle or person in sight.
- b) Information concerning aircraft and their passengers which face a grave and imminent threat and require immediate assistance.
- c) Information concerning urgent spare parts which are required for a continuation of flight and which have to be ordered in advance.
- d) Information concerning the apron personell and which imply an imminent danger to landing aircraft.

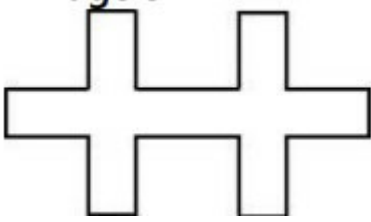
Exam simulation

Quiz BPL Hot Air - Balloon Pilot License - Operational Procedures



QuizVds.it

19. What is the meaning of this sign at an aerodrome? See figure (ALW-011) Siehe Anlage 1



- a) Landing prohibited for a longer period
- b) Glider flying is in progress
- c) After take-off and before landing all turns have to be made to the right
- d) Caution, manoeuvring area is poor

20. What is the correct way of establishing radio communication between D-EAZF and Dusseldorf Tower?

- a) Dusseldorf Tower over
- b) DEAZF is calling Dusseldorf Tower
- c) Tower from D-EAZF
- d) Dusseldorf Tower D-EAZF

21. From which altitude on does the body usually react to the decreasing atmospheric pressure?

- a) 7000 feet
- b) 12000 feet
- c) 2000 feet
- d) 10000 feet

22. The term "aerodrome elevation" is defined as...

- a) The highest point of the landing area.
- b) The average value of the height of the manoeuvring area.
- c) The highest point of the apron.
- d) The lowest point of the landing area.

Exam simulation

Quiz BPL Hot Air - Balloon Pilot License - Operational Procedures



QuizVds.it

23. The boiling point of propane gas at atmospheric conditions is:

- a) .+ 5 °C
- b) .- 42 °C
- c) .- 23 °C
- d) 0 °C

24. What is the correct way of using the aircraft call sign at first contact?

- a) Using the last two characters only
- b) Using all characters
- c) Using the first two characters only
- d) Using the first three characters only

25. What is the primary purpose of an aircraft accident investigation?

- a) To Determine the guilty party and draw legal consequences
- b) To identify the reasons and work out safety recommendations
- c) To clarify questions of liability within the meaning of compensation for passengers
- d) To work for the public prosecutor and help to follow-up flight accidents

26. The increase in load carrying capability by increasing the hull air temperature by the same temperature difference ...

- a) Increases with balloon mass.
- b) Increases with altitude.
- c) Decreases with sinking.
- d) Decreases with altitude.

27. Information about operational limits, loading and performance about an aircraft can be taken from which document?

- a) Airworthiness certificate.
- b) Operating handbook.
- c) Certificate of registration
- d) Flight Log book.

Exam simulation

Quiz BPL Hot Air - Balloon Pilot License - Operational Procedures



QuizVds.it

28. A wind shear is...

- a) A meteorological downslope wind phenomenon in the alps.
- b) A wind speed change of more than 15 kt.
- c) A vertical or horizontal change of wind speed and wind direction.
- d) A slow increase of the wind speed in altitudes above 13000 ft.

29. The standard state of gases refers to which temperature?

- a) 15° C
- b) 25° C
- c) 0° C
- d) 5° C

30. What cause may result in a reduction of volume of a free balloon?

- a) Reduction in mass
- b) A gust
- c) Cooling of environment air
- d) Increase in hull temperature

31. What wind conditions should be expected in the vicinity of showers or thunderstorms?

- a) Steady wind from direction of shower.
- b) Steady wind into direction of shower.
- c) Strong gust from variable directions
- d) Calm winds during passage of a shower.

32. The dry adiabatic lapse rate has a value of...

- a) 1,0° C / 100 m.
- b) 0,6° C / 100 m.
- c) 0,65° C / 100 m.
- d) 2° / 1000 ft.

Exam simulation

Quiz BPL Hot Air - Balloon Pilot License - Operational Procedures



QuizVds.it

33. A flight is called a "visual flight", if the...

- a) Flight is conducted in visual meteorological conditions.
- b) Visibility in flight is more than 8 km
- c) Flight is conducted under visual flight rules.
- d) Visibility in flight is more than 5 km.

34. During setup of a hot-air balloon, the hull is damaged with a hole with a size of 1.50 m x 1.00 m. Is Take-Off permitted?

- a) Yes, if all passengers agree.
- b) Yes, if permitted by the operating handbook.
- c) No, the hull has to be repaired first.
- d) Yes, if loading is reduced.

35. The final sinkrate of a hot-air balloon is achieved after descent over a vertical distance of:

- a) 1000 - 2000 m
- b) 50 - 100 m
- c) 250 - 450 m
- d) 500 - 1000 m

36. The character of an air mass is given by what properties?

- a) Wind speed and tropopause height
- b) Environmental lapse rate at origin
- c) Temperatures at origin and present region
- d) Region of origin and track during movement

37. How do dew point and relative humidity change with decreasing temperature?

- a) Dew point increases, relative humidity decreases
- b) Dew point remains constant, relative humidity decreases
- c) Dew point remains constant, relative humidity increases
- d) Dew point decreases, relative humidity increases

Exam simulation

Quiz BPL Hot Air - Balloon Pilot License - Operational Procedures



QuizVds.it

38. Changing the shape of the envelope of a free balloon, e.g. by a gust, results in:

- a) Increase in lift.
- b) Decrease in volume
- c) Increase of displaced air.
- d) Decrease in weight.

39. Which gas is heavier than air?

- a) Hydrogen
- b) Propane
- c) Helium
- d) Illuminating gas

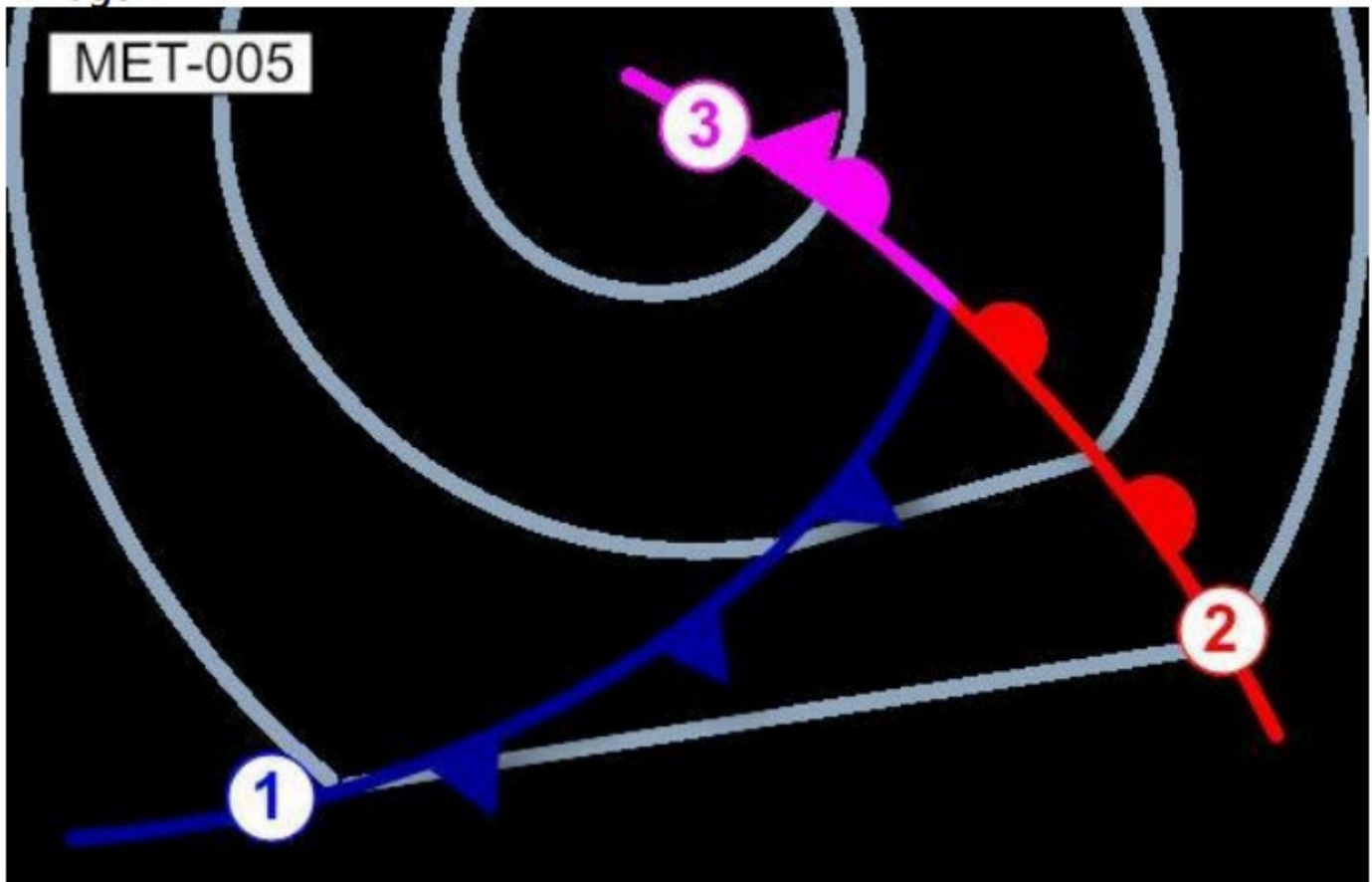
Exam simulation

Quiz BPL Hot Air - Balloon Pilot License - Operational Procedures



QuizVds.it

40. The symbol labeled (3) as shown in the picture is a / an... See figure (MET-005) Siehe Anlage 4



- a) Occlusion.
- b) Cold front.
- c) Warm front.
- d) Front aloft.

41. Clouds in high layers are referred to as...

- a) Strato-.
- b) Alto-.
- c) Cirro-.
- d) Nimbo-.

Exam simulation

Quiz BPL Hot Air - Balloon Pilot License - Operational Procedures



QuizVds.it

42. What is the meaning of the abbreviation "SERA"?

- a) Selective Radar Altimeter
- b) Standard European Routes of the Air
- c) Specialized Radar Approach
- d) Standardized European Rules of the Air

43. The minimum flight visibility at 5000 ft MSL in airspace B for VFR flights is...

- a) 5000 m.
- b) 3000 m.
- c) 1500 m.
- d) 8000 m.

44. Which direction corresponds to 'compass north' (CN)?

- a) The most northerly part of the magnetic compass in the aircraft, where the reading takes place
- b) The direction from an arbitrary point on Earth to the geographical North Pole
- c) The angle between the aircraft heading and magnetic north
- d) The direction to which the direct reading compass aligns due to earth's and aircraft's magnetic fields

45. The shortest distance between two points on Earth is represented by a part of...

- a) A small circle.
- b) A great circle.
- c) A rhumb line
- d) A parallel of latitude.

46. Which transponder code should be set during a radio failure without any request?

- a) 7000
- b) 7500
- c) 7700
- d) 7600

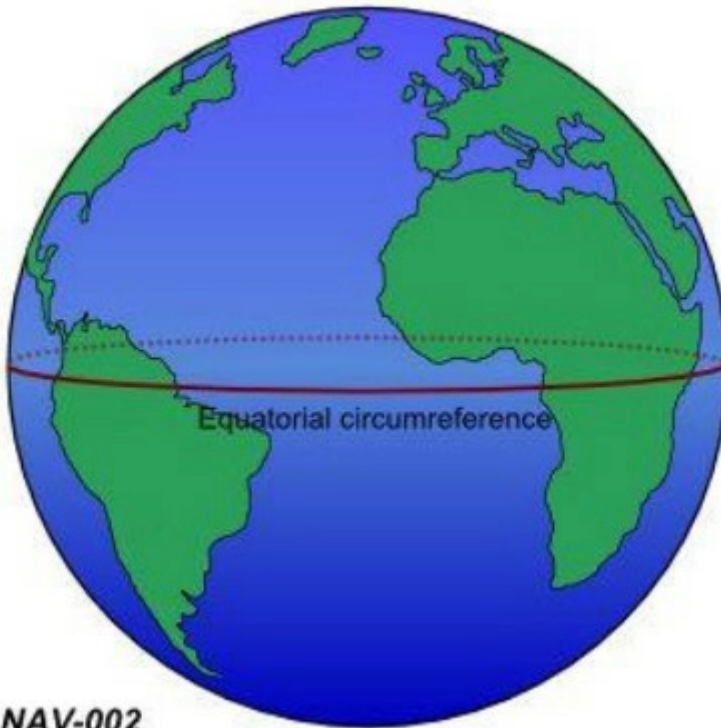
Exam simulation

Quiz BPL Hot Air - Balloon Pilot License - Operational Procedures



QuizVds.it

47. The circumference of the Earth at the equator is approximately... See figure (NAV-002) Siehe Anlage 1



- a) 40000 NM.
- b) 12800 km.
- c) 10800 km.
- d) 21600 NM.

48. What weather conditions can be expected in high pressure areas during winter?

- a) Squall lines and thunderstorms
- b) Changing weather with passing of frontal lines
- c) Calm winds and widespread areas with high fog
- d) Calm weather and cloud dissipation, few high Cu

49. Which of the following options states a correct position report?

- a) DEABC over "N" in FL 2500 ft
- b) DEABC over "N" at 35
- c) DEABC, "N", 2500 ft
- d) DEABC reaching "N"

Exam simulation

Quiz BPL Hot Air - Balloon Pilot License - Operational Procedures



QuizVds.it

50. What is the correct way of acknowledging the instruction "Squawk 4321, Call Bremen Radar on 131.325"?

- a) Roger
- b) Squawk 4321, wilco
- c) Squawk 4321, 131.325
- d) Wilco

51. Why should liquid gas bottles for hot-air balloons be transported upright?

- a) Because no other positions are approved.
- b) To prevent damage on the riser tube.
- c) To prevent exiting of residual gas.
- d) To keep the armature panel clean.

52. In what case is visibility transmitted in meters?

- a) Up to 10 km
- b) Greater than 10 km
- c) Greater than 5 km
- d) Up to 5 km

53. The shown NOTAM is valid until... A) 1024/13 B) LOWW C) 1305211200 D) 1305211400 E) STOCKERAU VOR STO 113.00 UNSERVICEABLE.

- a) 21/05/2014 13:00 UTC.
- b) 13/05/2013 12:00 UTC.
- c) 13/10/2013 00:00 UTC.
- d) 13/10/2013 00:00 UTC.

54. What is indicated by a red line on the hull thermometer with an analog scale?

- a) The minimum permissible value
- b) The take-off temperature
- c) The maximum permissible value
- d) The recommended operating value

Exam simulation

Quiz BPL Hot Air - Balloon Pilot License - Operational Procedures



QuizVds.it

55. Which dangerous attitudes are often combined?

- a) Impulsivity and carefulness
- b) Macho and invulnerability
- c) Self-abandonment and macho
- d) Invulnerability and self-abandonment

56. In case of radio communication failure within a CTR (control zone), the pilot has to ...

- a) Squawk transponder code A 7500
- b) This has no consequences while in VMC
- c) Continue the ride according to last clearance; in case of imminent danger land immediately.
- d) Maintain current altitude until leaving the control zone.

57. Point A on the Earth's surface lies exactly on the parallel of latitude of 47°50'27"N. Which point is exactly 240 NM north of A?

- a) 53°50'27"N
- b) 49°50'27"N
- c) 43°50'27"N
- d) 51°50'27"N

58. What is the meaning of the abbreviation "VMC"?

- a) Variable meteorological conditions
- b) Visual meteorological conditions
- c) Instrument flight conditions
- d) Visual flight rules

59. The hull load of a hot-air balloon is carried by ...

- a) By the towing ropes
- b) By the top ropes.
- c) The carrying ropes
- d) The fixing ropes.

Exam simulation

Quiz BPL Hot Air - Balloon Pilot License - Operational Procedures



QuizVds.it

60. Which are the different parts of the Aeronautical Information Publication (AIP)?

- a) GEN ENR AD
- b) GEN MET RAC
- c) GEN COM MET
- d) GEN AGA COM

61. What must be considered for cross-border flights?

- a) Transmission of hazard reports
- b) Approved exceptions
- c) Regular location messages
- d) Requires flight plans

62. What is the percentage of oxygen in the atmosphere at 6000 ft?

- a) 78 %
- b) 21 %
- c) 12 %
- d) 18.9 %

63. What is the difference in time when the sun moves 20° of longitude?

- a) 1:00 h
- b) 1:20 h
- c) 0:20 h
- d) 0:40 h

64. What statement is correct with regard to the density of a gas?

- a) The density increases with increasing temperature and constant volume.
- b) The density decreases with decreasing volume and constant temperature.
- c) The density decreases with increasing temperature and constant volume.
- d) The density decreases with increasing temperature and constant pressure.

Exam simulation

Quiz BPL Hot Air - Balloon Pilot License - Operational Procedures



QuizVds.it

65. What pressure pattern can be observed when a cold front is passing?

- a) Continually decreasing pressure
- b) Shortly decreasing, thereafter increasing pressure
- c) Constant pressure pattern
- d) Continually increasing pressure

66. Under which circumstances is it more likely to accept higher risks?

- a) During check flights due to a high level of nervousness
- b) During flight planning when excellent weather is forecast
- c) Due to group-dynamic effects
- d) If there is not enough information available

67. What does a readability of 3 indicate?

- a) The transmission is readable now and then
- b) The transmission is unreadable
- c) The transmission is readable but with difficulty
- d) The transmission is perfectly readable

68. The "swiss cheese model" can be used to explain the...

- a) Optimal problem solution
- b) State of readiness of a pilot
- c) Procedure for an emergency landing
- d) Error chain.

69. With regard to thunderstorms, strong up- and downdrafts appear during the...

- a) Mature stage.
- b) Dissipating stage.
- c) Thunderstorm stage.
- d) Initial stage.

Exam simulation

Quiz BPL Hot Air - Balloon Pilot License - Operational Procedures



QuizVds.it

70. What is the meaning of the abbreviation "AIREP"?

- a) What is the meaning of the abbreviation "AIREP"?
- b) Aircraft report
- c) Automatic identification report
- d) Aeronautical information report

Exam simulation

Quiz BPL Hot Air - Balloon Pilot License - Operational Procedures



QuizVds.it

Response Scheme

Compare your answers with the following diagram and mark your score!

01: A	02: A	03: A	04: B
05: C	06: D	07: D	08: B
09: A	10: D	11: C	12: D
13: C	14: D	15: B	16: A
17: C	18: B	19: B	20: D
21: A	22: A	23: B	24: B
25: B	26: D	27: B	28: C
29: B	30: B	31: C	32: A
33: C	34: B	35: C	36: D
37: C	38: B	39: B	40: A
41: C	42: D	43: A	44: D
45: B	46: D	47: D	48: C
49: C	50: C	51: B	52: D
53: D	54: C	55: B	56: C
57: D	58: B	59: C	60: A
61: D	62: B	63: B	64: D
65: B	66: C	67: C	68: C
69: A	70: B		

Exam simulation

Quiz BPL Hot Air - Balloon Pilot License - Operational Procedures



QuizVds.it

Response form

Use this form to mark your answers

01: _____	02: _____	03: _____	04: _____
05: _____	06: _____	07: _____	08: _____
09: _____	10: _____	11: _____	12: _____
13: _____	14: _____	15: _____	16: _____
17: _____	18: _____	19: _____	20: _____
21: _____	22: _____	23: _____	24: _____
25: _____	26: _____	27: _____	28: _____
29: _____	30: _____	31: _____	32: _____
33: _____	34: _____	35: _____	36: _____
37: _____	38: _____	39: _____	40: _____
41: _____	42: _____	43: _____	44: _____
45: _____	46: _____	47: _____	48: _____
49: _____	50: _____	51: _____	52: _____
53: _____	54: _____	55: _____	56: _____
57: _____	58: _____	59: _____	60: _____
61: _____	62: _____	63: _____	64: _____
65: _____	66: _____	67: _____	68: _____
69: _____	70: _____		