

Exam simulation

FAA Part 107 Drone Exam Prep - Loading and performance



QuizVds.it

STUDENT NAME:

DATE AND TIME:

01. What is the maximum altitude you can fly your drone above the ground (AGL) if you are NOT flying over a structure?

- a) 500 feet.
- b) 400 feet.
- c) 1,200 feet.

02. What is the legal status of recreational drone flying under the Exception for Limited Recreational Operations?

- a) It requires taking the TRUST test, but does not require a Part 107 certificate.
- b) It is completely unregulated.
- c) It requires a Part 107 certificate.

03. An air mass that resists vertical movement is considered:

- a) Unstable.
- b) Convective.
- c) Stable.

04. Can a person who does not hold a Part 107 Remote Pilot Certificate operate a drone for commercial purposes?

- a) Yes, if they are under the direct supervision of a certified Remote PIC who can take immediate control.
- b) Yes, as long as they pass a background check.
- c) No, it is strictly prohibited.

05. Katabatic winds are characterized by:

- a) Warm air rising up a mountain slope during the day.
- b) High-altitude jet streams dipping into the lower atmosphere.
- c) Cold, dense air flowing downhill into a valley, typically at night.

Exam simulation

FAA Part 107 Drone Exam Prep - Loading and performance



QuizVds.it

06. Which combination of atmospheric conditions will result in the most optimal propeller efficiency?

- a) Low temperature, low relative humidity, low density altitude.
- b) High temperature, low relative humidity, high density altitude.
- c) High temperature, high relative humidity, low density altitude.

07. Thunderstorms require three elements to form: high moisture, an unstable lapse rate (instability), and:

- a) High barometric pressure.
- b) A lifting force (such as heating from below or a frontal boundary).
- c) A strong temperature inversion.

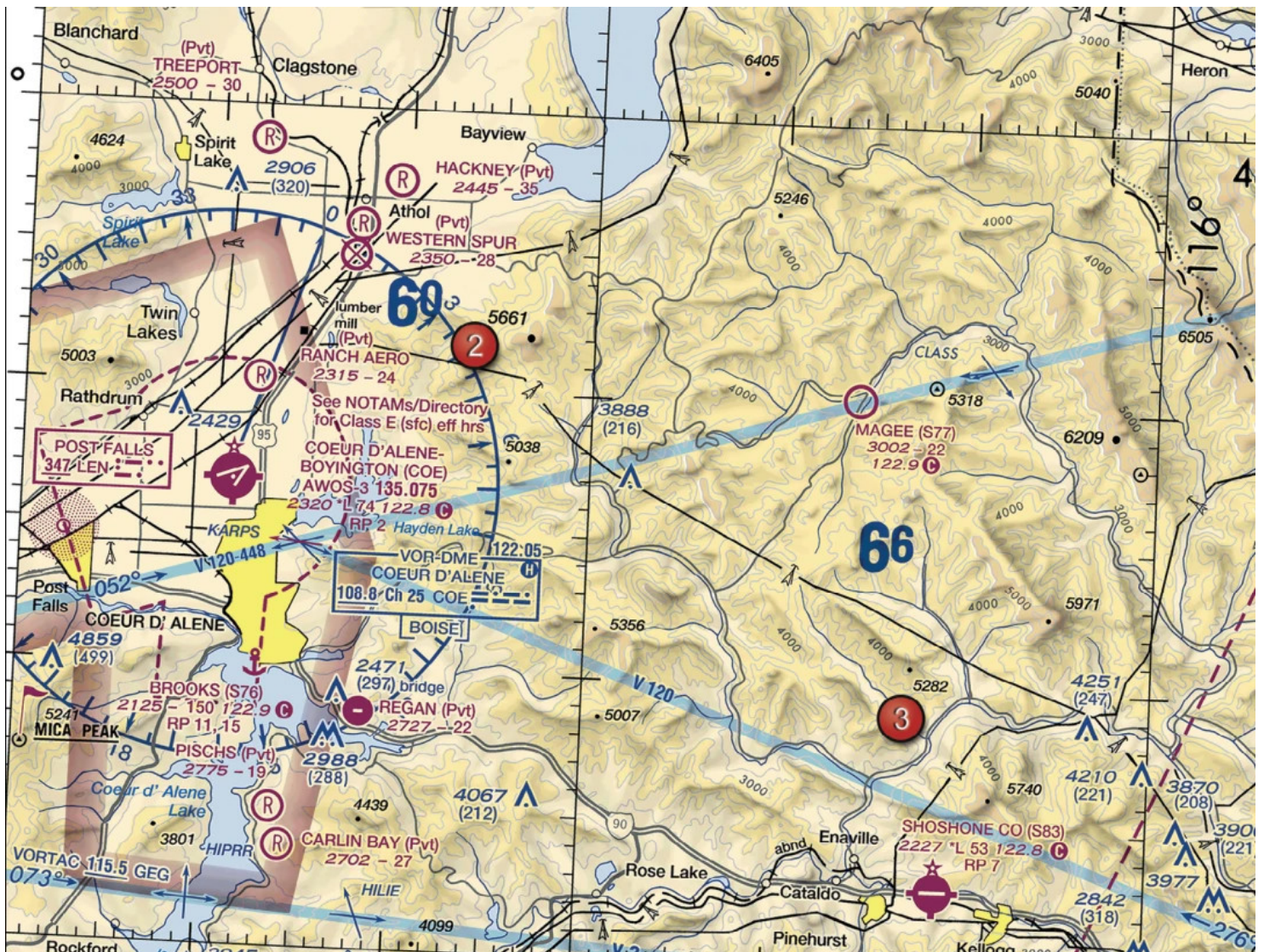
Exam simulation

FAA Part 107 Drone Exam Prep - Loading and performance



QuizVds.it

08. At Coeur D'Alene which frequency should be used as a Common Traffic Advisory Frequency (CTAF) to monitor airport traffic?



- a) 122.05 MHz.
- b) 122.8 MHz.
- c) 135.075 MHz.

09. If you experience a 'lost link' with your small UAS, what is the first and most critical consideration?

- a) Ensuring the aircraft's pre-programmed fail-safe maneuver does not create a hazard to other aircraft or people on the ground.
- b) Calling the nearest ATC tower.
- c) Turning off the control station completely to force a hard reset.

Exam simulation

FAA Part 107 Drone Exam Prep - Loading and performance



QuizVds.it

10. When should a remote pilot request an 'Abbreviated Briefing'?

- a) When they have no prior weather information.
- b) When they need to update specific information from a previous standard briefing.
- c) When their flight is more than 24 hours away.

11. As altitude increases, what happens to the true airspeed of a fixed-wing sUAS flying at a constant indicated airspeed?

- a) True airspeed decreases.
- b) True airspeed remains the same.
- c) True airspeed increases because the air is less dense.

12. Which factor would tend to increase the density altitude at a given airport?

- a) An increase in barometric pressure.
- b) An increase in ambient temperature.
- c) A decrease in relative humidity.

13. A temperature inversion would most likely result in which weather condition?

- a) Clouds with extensive vertical development above an inversion aloft.
- b) Good visibility in the lower levels of the atmosphere and poor visibility above an inversion aloft.
- c) An increase in temperature as altitude is increased.

14. According to the Part 107 rules, operations of a drone from a moving vehicle is allowed only if this condition is satisfied:

- a) It is done over a sparsely populated area.
- b) It is done by a Part 107-licensed drone pilot.
- c) The drone remains within visual line-of-sight.

15. This is a type of hazardous attitude characterized by wanting to do everything quickly with no due consideration of safety measures and operational objectives.

- a) Machismo.
- b) Invulnerability.
- c) Impulsivity.

Exam simulation

FAA Part 107 Drone Exam Prep - Loading and performance



QuizVds.it

16. Which weather conditions should a remote pilot consider primarily because they severely degrade lithium battery performance?

- a) Sub-freezing temperatures.
- b) High humidity.
- c) High temperatures.

17. A National Security Area (NSA) is depicted by a thick, dashed magenta line. What are the rules for flying an sUAS in an NSA?

- a) Pilots are requested to voluntarily avoid flying through the NSA, but it may be temporarily prohibited by a NOTAM.
- b) Flight is permanently prohibited under all circumstances.
- c) Authorization must be requested via LAANC.

18. What must a remote pilot obtain before operating a small UAS in Class C airspace?

- a) Prior authorization from Air Traffic Control (ATC).
- b) A waiver from the FAA Administrator.
- c) A Mode C transponder.

19. What weather chart provides a graphical overview of surface weather systems such as fronts, high and low-pressure centers?

- a) Weather Depiction Chart.
- b) Radar Summary Chart.
- c) Surface Analysis Chart.

20. What is 'load factor' in aviation?

- a) The total weight of the aircraft including its payload.
- b) The ratio of the total load supported by the aircraft's wings/rotors to the actual weight of the aircraft and its contents.
- c) The amount of drag generated by the payload.

Exam simulation

FAA Part 107 Drone Exam Prep - Loading and performance



QuizVds.it

21. What is the antidote for the hazardous attitude of 'Anti-Authority'?

- a) It could happen to me.
- b) Follow the rules. They are usually right.
- c) Not so fast. Think first.

22. In the METAR 'SPECI KMDW 121856Z 32005KT 1 1/2SM RA OVC007 17/16 A2980', what does 'SPECI' indicate?

- a) A specified terminal forecast.
- b) A special unscheduled observation indicating a significant change in weather.
- c) A special restricted airspace notice.

23. What condition is necessary for structural icing to occur in flight?

- a) Clear skies and a temperature inversion.
- b) Flight through cirrus clouds.
- c) The aircraft must be flying through visible moisture (like rain or clouds) and the temperature must be at or below freezing.

24. A drone weighs 0.54 lbs. Is it required to be registered if flown under Part 107?

- a) No, drones under 0.55 lbs do not need registration.
- b) Yes, all drones flown under Part 107 must be registered regardless of weight.
- c) Only if it is flown in controlled airspace.

25. If you are operating near an uncontrolled airport, what frequency should you monitor to listen to manned aircraft traffic?

- a) The CTAF (Common Traffic Advisory Frequency) listed for that airport.
- b) The regional ATC approach frequency.
- c) 121.5 MHz (the emergency frequency).

26. What does a 'P' followed by a number (e.g., P-40) indicate on a sectional chart?

- a) A Parachute jump area.
- b) A Prohibited Area.
- c) A Private airport.

Exam simulation

FAA Part 107 Drone Exam Prep - Loading and performance



QuizVds.it

27. During a preflight inspection, you notice a small crack in one of the drone's propellers. What is the correct action?

- a) Apply strong glue to the crack and proceed with the flight.
- b) Fly the drone but avoid high-speed maneuvers.
- c) Discard the damaged propeller and replace it before flying.

28. What is the most dangerous characteristic of a microburst?

- a) A powerful downdraft that can reach up to 6,000 feet per minute, followed by severe wind shear.
- b) Hail stones larger than 2 inches in diameter.
- c) A sudden and dramatic drop in temperature.

29. Which statement about longitude and latitude is true?

- a) The 0° line of latitude passes through Greenwich, England.
- b) Lines of longitude cross the Equator at right angles.
- c) Lines of longitude are parallel to the Equator.

30. What is the standard temperature lapse rate with increasing altitude?

- a) 1 °C per 1,000 feet.
- b) 2 °C per 1,000 feet.
- c) 3 °C per 1,000 feet.

31. You are operating a drone weighing 4 pounds. It accidentally hits a person on a bicycle, causing a concussion and requiring them to stay overnight in the hospital. Must you report this?

- a) Yes, because it resulted in a serious injury.
- b) No, because the drone weighs less than 5 pounds.
- c) No, only property damage is reported.

32. What type of weather is generally associated with an advancing cold front?

- a) Towering cumulus clouds, showery precipitation, and thunderstorms.
- b) Stratiform clouds, widespread rain, and poor visibility.
- c) Clear skies and calm winds.

Exam simulation

FAA Part 107 Drone Exam Prep - Loading and performance



QuizVds.it

33. When does an aerodynamic stall occur?

- a) When the airspeed drops below 10 knots.
- b) When the engine loses power.
- c) When the critical angle of attack is exceeded.

34. While inspecting a 500-foot tower in Class G airspace, you fly up to 900 feet AGL (within the 400-foot radius). The Class E airspace at this location begins at 700 feet AGL. Do you need ATC authorization?

- a) No, Part 107 authorization is only required for Class B, C, D, and surface-area Class E designated for an airport.
- b) Yes, because you entered Class E airspace.
- c) Yes, any flight above 700 feet requires authorization.

35. In weight and balance calculations, 'moment' is defined as:

- a) Weight multiplied by the arm.
- b) Weight divided by the arm.
- c) The total duration of the flight.

36. At what altitude does wind shear occur?

- a) Below 5,000 feet AGL.
- b) Above 20,000 feet MSL.
- c) At any altitude.

37. What is relative humidity?

- a) The ratio of the amount of water vapor actually in the air to the maximum amount that the air could hold at that temperature.
- b) The temperature at which air becomes saturated.
- c) The amount of moisture in the air compared to standard sea level pressure.

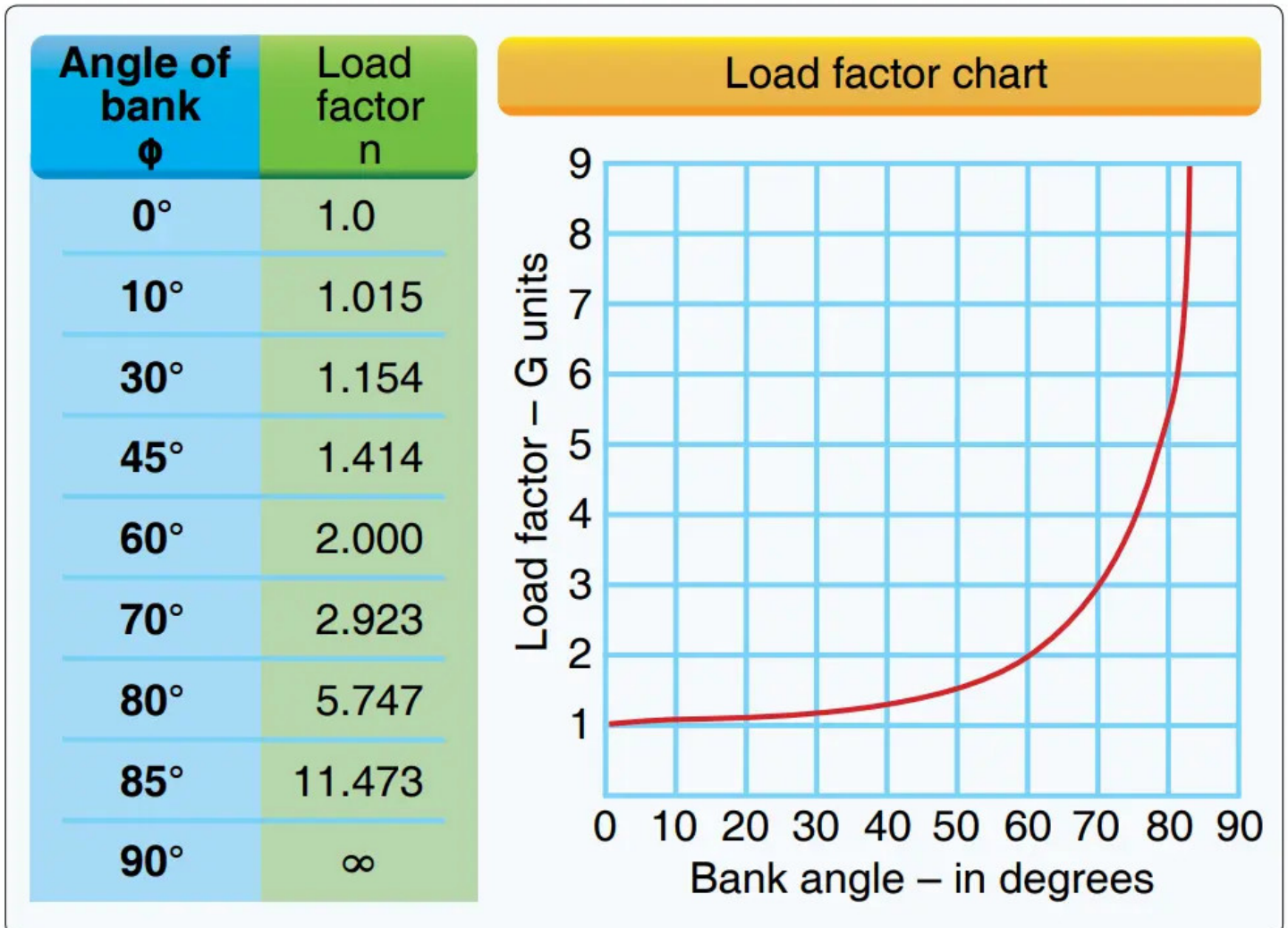
Exam simulation

FAA Part 107 Drone Exam Prep - Loading and performance



QuizVds.it

38. If an unmanned aircraft weighs 45 pounds, what approximate weight would the aircraft structure be required to support during a 45° banked turn while maintaining altitude?



- a) 72 pounds.
- b) 63 pounds.
- c) 45 pounds.

39. Why are surface winds generally slower and cross the isobars at an angle compared to winds aloft?

- a) Because of surface friction from terrain, trees, and buildings.
- b) Because the Coriolis force is stronger at the surface.
- c) Because the air is warmer at the surface.

Exam simulation

FAA Part 107 Drone Exam Prep - Loading and performance



QuizVds.it

40. Which of the following describes the 'Person Manipulating the Controls' under Part 107?

- a) They must always hold a Part 107 certificate.
- b) A person controlling the flight of an sUAS under the direct supervision of the Remote PIC.
- c) The visual observer when they hold the radio.

41. Before conducting any flight operation, the Remote PIC must:

- a) File a flight plan with the nearest ATC facility.
- b) Assess the operating environment and ensure the sUAS is safe for flight.
- c) Notify local law enforcement.

42. It is 7:00 am. Official sunrise is at 7:40 am. Your UAV does not have any anti-collision lighting. How long do you need to wait before you can fly under Part 107?

- a) 40 minutes.
- b) 10 minutes.
- c) 70 minutes.

43. You are hired to film a major league baseball game at a stadium seating 35,000 people. Are you allowed to fly your drone over the stadium during the game?

- a) Yes, as long as you stay 400 feet above the stadium.
- b) No, a stadium TFR prohibits flights starting 1 hour before the event until 1 hour after.
- c) Yes, if you obtain written permission from the stadium manager.

44. During a flight, the drone battery catches fire and destroys the drone, but causes no other damage. Do you need to report this to the FAA?

- a) No, damage to the drone itself does not require reporting.
- b) Yes, all fires must be reported within 10 days.
- c) Yes, because the cost of the drone exceeds \$500.

Exam simulation

FAA Part 107 Drone Exam Prep - Loading and performance



QuizVds.it

45. If a pilot takes an over-the-counter medication that causes drowsiness, what is the proper action?

- a) Do not fly until the medication has completely cleared from the body and the condition has resolved.
- b) Fly only if the operation is strictly for recreational purposes.
- c) Fly, but use a visual observer to compensate for the drowsiness.

46. The Coriolis force deflects winds to the _____ in the Northern Hemisphere.

- a) Right.
- b) Left.
- c) South.

47. What is the primary danger to a drone pilot when flying in an area with a strong temperature inversion?

- a) The battery will overheat due to the rapidly rising air.
- b) The drone will be pushed uncontrollably upward into controlled airspace.
- c) Poor visibility due to trapped smoke, dust, and haze in the lower atmosphere, making VLOS difficult.

48. Which of the following is true regarding lithium polymer (LiPo) batteries used in most small UAS?

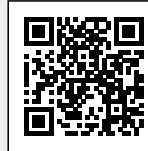
- a) They are highly flammable and can catch fire if punctured, overcharged, or exposed to extreme heat.
- b) They perform best when stored fully depleted.
- c) They are immune to temperature extremes.

49. What causes the wind to blow?

- a) The rotation of the Earth.
- b) Ocean currents.
- c) Differences in atmospheric pressure.

Exam simulation

FAA Part 107 Drone Exam Prep - Loading and performance



QuizVds.it

50. Sea breezes are caused by:

- a) The fact that land heats faster than water during the day, causing air to rise over the land and cooler air from the water to flow in.
- b) The rotation of the Earth pulling ocean currents inland.
- c) The fact that water heats faster than land during the day.

51. When may a remote pilot operate a small UAS from a moving watercraft?

- a) When the operation takes place over a sparsely populated area.
- b) When operating in Class B airspace.
- c) It is never permitted to operate from a moving watercraft.

52. In meteorology, what is a 'front'?

- a) The center of a high-pressure system.
- b) The boundary layer between two distinct air masses of different temperatures and densities.
- c) The leading edge of a microburst.

53. Where should a remote pilot look to find the official weight and balance limits for their specific small UAS?

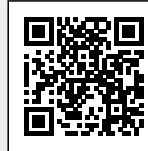
- a) 14 CFR Part 107 regulations.
- b) The manufacturer's operating manual or Pilot's Operating Handbook (POH).
- c) The FAA DroneZone website.

54. You are hired to inspect a cell tower located in Class G airspace. The tower is 500 feet tall. Can you legally fly above the tower?

- a) No, you can never fly above 400 feet AGL.
- b) Yes, you can fly up to 900 feet AGL (400 feet above the top of the 500-foot tower) while remaining within a 400-foot radius of the tower.
- c) Yes, but you need ATC authorization because you are above 400 feet.

Exam simulation

FAA Part 107 Drone Exam Prep - Loading and performance



QuizVds.it

55. If you use a visual observer (VO), how must you communicate with them?

- a) Via a two-way radio only.
- b) Through hand signals only.
- c) Through an effective and continuous communication method.

56. Are remote pilots allowed to fly a small UAS in a Prohibited Area?

- a) Yes, with ATC authorization.
- b) Yes, if flying under 400 feet AGL.
- c) No, flights are prohibited for national security or other reasons.

57. What happens to the stall speed of an aircraft during a banked turn?

- a) The stall speed increases as the bank angle increases.
- b) The stall speed decreases as the bank angle increases.
- c) The stall speed remains the same regardless of bank angle.

58. What is the expected duration of an individual microburst?

- a) Up to an hour.
- b) Between 30 and 45 minutes.
- c) Seldom longer than 15 minutes from the time it strikes the ground until dissipation.

59. How are the weather conditions at Los Angeles International Airport (KLAX) best described?

METAR KINK 121845Z 11012G18KT 15SM SKC 25/17 A3000

METAR KBOI 121854Z 13004KT 30SM SCT150 17/6 A3015

METAR KLAX 121852Z 25004KT 6SM BR SCT007 SCT250 16/15 A2991

SPECI KMDW 121856Z 32005KT 1 1/2SM RA OVC007 17/16 A2980 RMK RAB35

SPECI KJFK 121853Z 18004KT 1/2SM FG R04/2200 OVC005 20/18 A3006

- a) Visibility of 16 statute miles, wind speed of 5 knots.
- b) Scattered clouds at 700 feet, temperature of 16 °C.
- c) Wind coming from NE, visibility obscured by fog.

Exam simulation

FAA Part 107 Drone Exam Prep - Loading and performance



QuizVds.it

60. On a sectional chart, what does a dashed blue line indicate?

- a) Class E airspace starting at the surface.
- b) Class C airspace.
- c) Class D airspace.

61. When an aircraft's center of gravity is located forward of the forward CG limit, the aircraft:

- a) Is highly unstable and difficult to control.
- b) Will stall at a lower airspeed.
- c) Will be highly stable, but will require more elevator pressure to raise the nose, decreasing performance.

62. In weight and balance terminology, what is an 'arm'?

- a) The structural boom holding the motor.
- b) The horizontal distance in inches from the reference datum line to the center of gravity of an item.
- c) The total lifting force of one propeller.

63. How are cloud bases reported in METARs and TAFs?

- a) In thousands of feet MSL.
- b) In hundreds of feet AGL.
- c) In tens of feet MSL.

64. What does a 'broken' (BKN) cloud layer mean in a METAR report?

- a) 1/8 to 2/8 of the sky is covered by clouds.
- b) 3/8 to 4/8 of the sky is covered by clouds.
- c) 5/8 to 7/8 of the sky is covered by clouds, which constitutes a ceiling.

65. How should you pronounce the number '9' over aviation radios?

- a) Nine.
- b) Nino.
- c) Niner.

Exam simulation

FAA Part 107 Drone Exam Prep - Loading and performance



QuizVds.it

66. While doing a commercial drone job, your drone gets into an accident and crashes. Which of the following outcomes are you NOT required to report to the FAA?

- a) Damage to a car that will cost around \$750 to repair.
- b) A serious injury that requires the victim to be hospitalized.
- c) A minor injury to a person that needs to be addressed with first aid.

67. What is a Terminal Aerodrome Forecast (TAF)?

- a) A report of current weather conditions at an airport.
- b) A concise statement of the expected meteorological conditions at an airport during a specified period.
- c) A warning of severe weather en route.

68. When approaching taxiway holding lines from the side with the continuous lines, the pilot

- a) may continue taxiing.
- b) should not cross the lines without ATC clearance.
- c) should continue taxiing until all parts of the aircraft have crossed the lines.

69. What is a Convective SIGMET?

- a) An advisory warning of strong surface winds over 20 knots.
- b) An advisory concerning convective weather significant to the safety of all aircraft, including tornadoes, lines of thunderstorms, and embedded thunderstorms.
- c) A standard weather forecast for high-altitude passenger jets.

70. In a TAF, what does the 'FM' (From) group indicate?

- a) A gradual change in weather taking place over several hours.
- b) Temporary fluctuations in weather.
- c) A rapid and significant change in weather expected within less than an hour.

Exam simulation

FAA Part 107 Drone Exam Prep - Loading and performance



QuizVds.it

Response Scheme

Compare your answers with the following diagram and mark your score!

01: **B**

02: **A**

03: **C**

04: **A**

05: **C**

06: **A**

07: **B**

08: **B**

09: **A**

10: **B**

11: **C**

12: **B**

13: **C**

14: **A**

15: **C**

16: **A**

17: **A**

18: **A**

19: **C**

20: **B**

21: **B**

22: **B**

23: **C**

24: **B**

25: **A**

26: **B**

27: **C**

28: **A**

29: **B**

30: **B**

31: **A**

32: **A**

33: **C**

34: **A**

35: **A**

36: **C**

37: **A**

38: **B**

39: **A**

40: **B**

41: **B**

42: **A**

43: **B**

44: **A**

45: **A**

46: **A**

47: **C**

48: **A**

49: **C**

50: **A**

51: **A**

52: **B**

53: **B**

54: **B**

55: **C**

56: **C**

57: **A**

58: **C**

59: **A**

60: **C**

61: **C**

62: **B**

63: **B**

64: **C**

65: **C**

66: **C**

67: **B**

68: **B**

69: **B**

70: **C**

Exam simulation

FAA Part 107 Drone Exam Prep - Loading and performance



QuizVds.it

Response form

Use this form to mark your answers

01: _____	02: _____	03: _____	04: _____
05: _____	06: _____	07: _____	08: _____
09: _____	10: _____	11: _____	12: _____
13: _____	14: _____	15: _____	16: _____
17: _____	18: _____	19: _____	20: _____
21: _____	22: _____	23: _____	24: _____
25: _____	26: _____	27: _____	28: _____
29: _____	30: _____	31: _____	32: _____
33: _____	34: _____	35: _____	36: _____
37: _____	38: _____	39: _____	40: _____
41: _____	42: _____	43: _____	44: _____
45: _____	46: _____	47: _____	48: _____
49: _____	50: _____	51: _____	52: _____
53: _____	54: _____	55: _____	56: _____
57: _____	58: _____	59: _____	60: _____
61: _____	62: _____	63: _____	64: _____
65: _____	66: _____	67: _____	68: _____
69: _____	70: _____		