

Exam simulation

SPL - Sailplane Pilot License - Air Law



QuizVds.it

STUDENT NAME:

DATE AND TIME:

01. During a right turn, the yaw string is drawn to the left from center position. By what rudder input can the string be centered again?

- a) Less bank, less rudder in turn direction
- b) Less bank, more rudder in turn direction
- c) More bank, less rudder in turn direction
- d) More bank, more rudder in turn direction

02. Which abbreviation is used for the term "abeam"?

- a) ABB
- b) ABM
- c) ABE
- d) ABA

03. The required data for a mass and balance calculation including masses and balance arms can be found in the...

- a) Certificate of airworthiness
- b) Mass and balance section of the pilot's operating handbook of this particular aircraft.
- c) Performance section of the pilot's operating handbook of this particular aircraft.
- d) Documentation of the annual inspection.

04. What ist the correct term for an involuntary and stereotypical reaction of an organism to the stimulation of a receptor?

- a) Reduction
- b) Coherence
- c) Virulence
- d) Reflex

Exam simulation

SPL - Sailplane Pilot License - Air Law



QuizVds.it

05. What is the meaning of the phrase "Correction"?

- a) I have received all of your last transmission
- b) I understand your message and will comply with it
- c) Permission for proposed action is granted
- d) An error has been made in this transmission. The correct version is...

06. How are rhumb lines and great circles depicted on a direct Mercator chart?

- a) Rhumb lines: straight lines Great circles: curved lines
- b) Rhumb lines: straight lines Great circles: straight lines
- c) Rhumb lines: curved lines Great circles: straight lines
- d) Rhumb lines: curved lines Great circles: curved lines

07. Pressure compensation on an wing occurs at the...

- a) Wing tips.
- b) Leading edge.
- c) Trailing edge.
- d) Wing roots

08. What pressure pattern can be observed during the passage of a polar front low?

- a) Rising pressure in front of the warm front, constant pressure within the warm sector, rising pressure behind the cold front
- b) Rising pressure in front of the warm front, rising pressure within the warm sector, falling pressure behind the cold front
- c) Falling pressure in front of the warm front, constant pressure within the warm sector, rising pressure behind the cold front
- d) Falling pressure in front of the warm front, constant pressure within the warm sector, falling pressure behind the cold front

09. A pilot can contact FIS (flight information service)...

- a) By a personal visit.
- b) Via telephone.
- c) Via radio communication.
- d) Via internet.

Exam simulation

SPL - Sailplane Pilot License - Air Law



QuizVds.it

10. What is the meaning of the abbreviation "SERA"?

- a) Selective Radar Altimeter
- b) Standardized European Rules of the Air
- c) Standard European Routes of the Air
- d) Specialized Radar Approach

11. The term 'agonic line' is defined as a line on Earth or an aeronautical chart, connecting all points with the...

- a) Heading of 0°.
- b) Deviation of 0°.
- c) Inclination of 0°.
- d) Variation of 0°.

12. The term "center of gravity" is defined as...

- a) Another designation for the neutral point.
- b) The heaviest point on an aeroplane.
- c) Half the distance between the neutral point and the datum line.
- d) Half the distance between the neutral point and the datum line.

13. What cloud type can typically be observed across widespread high pressure areas during summer?

- a) Overcast low stratus
- b) Scattered Cu clouds
- c) Overcast Ns clouds
- d) Squall lines and thunderstorms

14. The term "balance arm" in the context of a mass and balance calculation defines the...

- a) Distance of a mass from the center of gravity
- b) Point on the longitudinal axis of an aeroplane or its extension from which the centers of gravity of all masses are referenced.
- c) Distance from the datum to the center of gravity of a mass.
- d) Point through which the force of gravity is said to act on a mass.

Exam simulation

SPL - Sailplane Pilot License - Air Law



QuizVds.it

15. What leads to a decreased stall speed V_s (IAS)?

- a) Lower density
- b) Decreasing weight
- c) Lower altitude
- d) Higher load factor

16. If surrounded by airflow ($v > 0$), any arbitrarily shaped body produces...

- a) Drag and lift.
- b) Drag.
- c) Lift without drag.
- d) Constant drag at any speed.

17. Which point on the aerofoil is represented by number 1? See figure (PFA-009) Siehe Anlage 2

- a) Center of pressure
- b) Stagnation point
- c) Stagnation point
- d) Transition point

18. Which levers in a glider's cockpit are indicated by the colors red, blue and green? Levers for usage of ...

- a) Gear, speed brakes and elevator trim tab.
- b) Speed brakes, cable release and elevator trim.
- c) Speed brakes, cabin hood lock and gear.
- d) Cabin hood release, speed brakes, elevator trim

19. What heights should be considered for landing phases with a glider plane?

- a) 100 m abeam threshold and 50 m after final approach turn
- b) 300 m abeam threshold and 150 m in final approach
- c) 500 m abeam threshold and 50 m after final approach turn
- d) 150 - 200 m abeam threshold and 100 m after final approach turn

Exam simulation

SPL - Sailplane Pilot License - Air Law



QuizVds.it

20. An aircraft in the northern hemisphere intends to turn on the shortest way from a heading of 030° to a heading of 180°. At approximately which indicated magnetic heading should the turn be terminated?

- a) 150°
- b) 180°
- c) 360°
- d) 210°.

21. What is the gas composition of "air"?

- a) Oxygen 78 % Water vapour 21 % Nitrogen 1 %
- b) Oxygen 21 % Nitrogen 78 % Noble gases / carbon dioxide 1 %
- c) Oxygen 21 % Water vapour 78 % Noble gases / carbon dioxide 1 %
- d) Nitrogen 21 % Oxygen 78 % Noble gases / carbon dioxide 1 %

22. 5500 m equal...

- a) 18000 ft.
- b) 30000 ft.
- c) 7500 ft.
- d) 10000 ft.

23. What is the difference in latitude between A (12°53'30"N) and B (07°34'30"S)?

- a) .05,19°
- b) .20,28°
- c) .05°19'00"
- d) .20°28'00"

24. The character of an air mass is given by what properties?

- a) Wind speed and tropopause height
- b) Environmental lapse rate at origin
- c) Region of origin and track during movement
- d) Temperatures at origin and present region

Exam simulation

SPL - Sailplane Pilot License - Air Law



QuizVds.it

25. Which answer completes the flight plan (marked cells)? See annex (NAV-014) (3,00 P.) Siehe Anlage 3

P6	P7		P8	P9		P9	P10
NAV-014	Wind W/V		rwk	L	rwSK	MW	mwSK
VE	Wind W/WS						
TAS	Richtung	Geschw.	TC	WCA	TH	VAR	MH
75	320	15	247	+11	258	1	257
95	320	15	152	+2	154	1	153
95	320	15	139	0	139	1	138
95	320	15	161	+3	164	1	163
95	320	15	179	+6		1	

- a) TH: 185°. MH: 184°. MC: 178°.
- b) TH: 173°. MH: 184°. MC: 178°.
- c) TH: 173°. MH: 174°. MC: 178°.
- d) TH: 185°. MH: 185°. MC: 180°.

26. Given: True course: 165°. TAS: 90 kt. Wind: 130°/20 kt. Distance: 153 NM. The true heading equals...

- a) 152°.
- b) 158°.
- c) 165°.
- d) 126°.

Exam simulation

SPL - Sailplane Pilot License - Air Law



QuizVds.it

27. What pressure pattern can be observed at a lift-generating wing profile at positive angle of attack?

- a) Low pressure is created above, higher pressure below the profile
- b) Pressure above remains unchanged, higher pressure is created below the profile
- c) High pressure is created above, lower pressure below the profile
- d) Pressure below remains unchanged, lower pressure is created above the profile

28. What is the correct term for the system which, among others, controls breathing, digestion, and heart frequency?

- a) Critical nervous system
- b) Autonomic nervous system
- c) Automatical nervous system
- d) Compliant nervous system

29. What kind of information should be included in an urgency message?

- a) Nature of problem or observation, important information for support, departure aerodrome, information about position, heading and altitude
- b) Intended routing, important information for support, intentions of the pilot, information about position, departure aerodrome, heading and altitude
- c) Intended routing, important information for support, intentions of the pilot, departure aerodrome, destination aerodrome, heading and altitude
- d) Nature of problem or observation, important information for support, intentions of the pilot, information about position, heading and altitude

30. The trim tab at the elevator is deflected upwards. In which position is the corresponding indicator?

- a) Neutral position
- b) Nose-down position
- c) Nose-up position
- d) Laterally trimmed

31. The term "runway" is defined as a...

- a) Round area on an aerodrome prepared for the landing and take-off of aircraft
- b) Rectangular area on a land aerodrome prepared for the landing and take-off of helicopters.
- c) Rectangular area on a land aerodrome prepared for the landing and take-off of aircraft.
- d) Rectangular area on a land or water aerodrome prepared for the landing and take-off of aircraft.

Exam simulation

SPL - Sailplane Pilot License - Air Law



QuizVds.it

32. What is the approximate speed of electromagnetic wave propagation?

- a) 123000 m/s
- b) 300000 km/s
- c) 123000 km/s
- d) 300000 m/s

33. When flying into heavy snowfall, most dangerous will be the...

- a) Sudden blockage of pitot-static system
- b) Sudden increase of airframe icing.
- c) Sudden increase in airplane mass
- d) Sudden loss of visibility

34. During approach, tower provides the following information: "Wind 15 knots, gusts 25 knots". How should the landing be performed?

- a) Approach with minimum speed, correct changes in attitude with careful rudder inputs
- b) Approach with normal speed, maintain speed using spoiler flaps
- c) Approach with increased speed, correct changes in attitude with firm rudder inputs
- d) Approach with increased speed, avoid usage of spoiler flaps

35. The dry adiabatic lapse rate has a value of...

- a) 0,65° C / 100 m.
- b) 1,0° C / 100 m.
- c) 2° / 1000 ft.
- d) 0,6° C / 100 m.

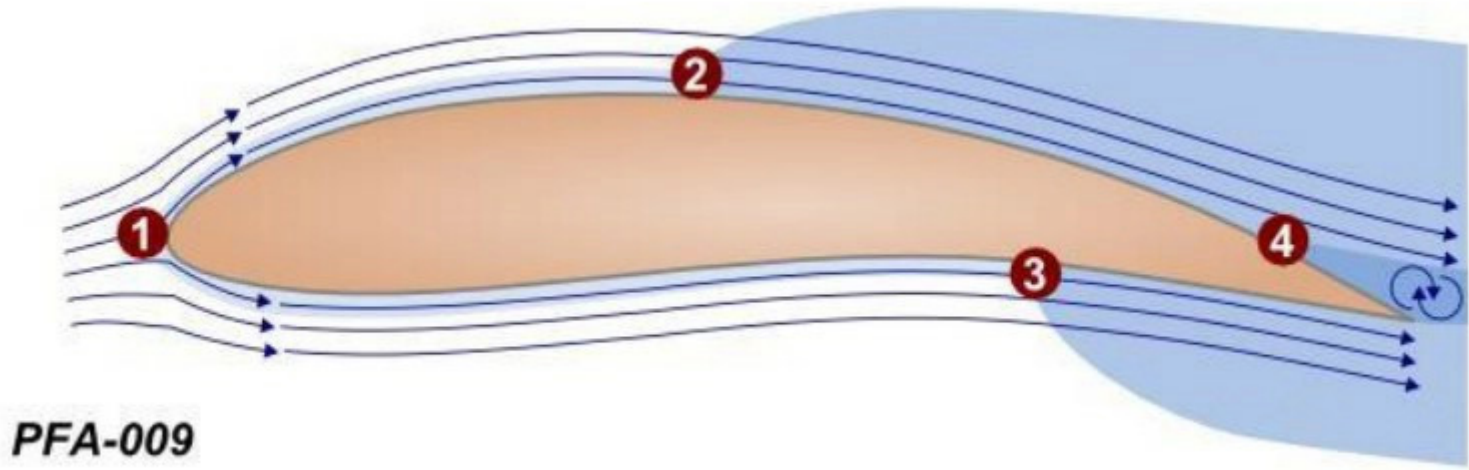
Exam simulation

SPL - Sailplane Pilot License - Air Law



QuizVds.it

36. Which point on the aerofoil is represented by number 3? See figure (PFA-009) Siehe Anlage 2



- a) Stagnation point
- b) Separation point
- c) Center of pressure
- d) Transition point

37. Which section of the flight manual describes the basic empty mass of an aircraft?

- a) Limitations
- b) Normal procedures
- c) Weight and balance
- d) Performance

38. With Central European Summer Time (CEST) given as UTC+2, what UTC time corresponds to 1600 CEST?

- a) 1600 UTC.
- b) 1700 UTC.
- c) 1500 UTC.
- d) 1400 UTC.

Exam simulation

SPL - Sailplane Pilot License - Air Law



QuizVds.it

39. What is the function of the static rudder balance?

- a) To prevent control surface flutter
- b) To trim the controls almost without any force
- c) To increase the control stick forces
- d) To limit the control stick forces

40. The critical angle of attack...

- a) Decreases with forward center of gravity position.
- b) Changes with increasing weight.
- c) Is independent of the weight.
- d) Increases with backward center of gravity position.

41. With regard to thunderstorms, strong up- and downdrafts appear during the...

- a) Mature stage.
- b) Dissipating stage.
- c) Initial stage.
- d) Thunderstorm stage.

42. What is the effect of pulling the control yoke or stick backwards?

- a) The aircraft's tail will produce an decreased upward force, causing the aircraft's nose to drop
- b) The aircraft's tail will produce an increased upward force, causing the aircraft's nose to rise
- c) The aircraft's tail will produce an increased downward force, causing the aircraft's nose to drop
- d) The aircraft's tail will produce an increased downward force, causing the aircraft's nose to rise

43. What is the meaning of the abbreviation "TRA"?

- a) Transponder Area
- b) Temporary Reserved Airspace
- c) Terminal Area
- d) Temporary Radar Routing Area

Exam simulation

SPL - Sailplane Pilot License - Air Law



QuizVds.it

44. Which abbreviation is used for the term "obstacle"?

- a) OBST
- b) OBTC
- c) OST
- d) OBS

45. What color has the emergency hood release handle?

- a) Green
- b) Red
- c) Yellow
- d) Blue

46. What is an indication for a macho attitude?

- a) Risky flight maneuvers to impress spectators on ground
- b) Comprehensive risk assessment when faced with unfamiliar situations
- c) Quick resignation in complex and critical situations
- d) Careful walkaround procedure

47. Two aircraft of the same type, same grossweight and same configuration fly at different airspeeds. Which aircraft will cause more severe wake turbulence?

- a) The aircraft flying at lower altitude.
- b) The aircraft flying at higher speed.
- c) The aircraft flying at higher altitude
- d) The aircraft flying at slower speed

48. The distance between the center of gravity and the datum is called...

- a) Lever.
- b) Torque.
- c) Span width.
- d) Balance arm.

Exam simulation

SPL - Sailplane Pilot License - Air Law



QuizVds.it

49. After getting around a turning point, what should a glider pilot be prepared for? (2,00 P.)

- a) For weakening thermals due to the progressing time
- b) For a changed horizontal picture due to lower cloud bases
- c) For increased cloud dissipation due to the progressing time
- d) For a changed cloud picture due to the apparently changed position of the sun

50. When landing with tailwind, the pilot has to...

- a) Approach with normal speed and shallow angle.
- b) Compensate tailwind by sideslip.
- c) Increase approach speed.
- d) Land with gear retracted to shorten ground roll distance

51. Air consists of oxygen, nitrogen and other gases. What is the approximate percentage of other gases?

- a) 21 %
- b) 1 %
- c) 78 %
- d) 0.1 %

52. The altimeter's reference scale is set to airfield pressure (QFE). What indication is shown during the flight?

- a) Altitude above MSL
- b) Height above airfield
- c) Airfield elevation
- d) Pressure altitude

53. An aircraft is flying at a pressure altitude of 7000 feet with an outside air temperature (OAT) of +11°C. The QNH altitude is 6500 ft. The true altitude equals...

- a) 6500 ft.
- b) 7000 ft
- c) 6250 ft.
- d) 6750 ft.

Exam simulation

SPL - Sailplane Pilot License - Air Law

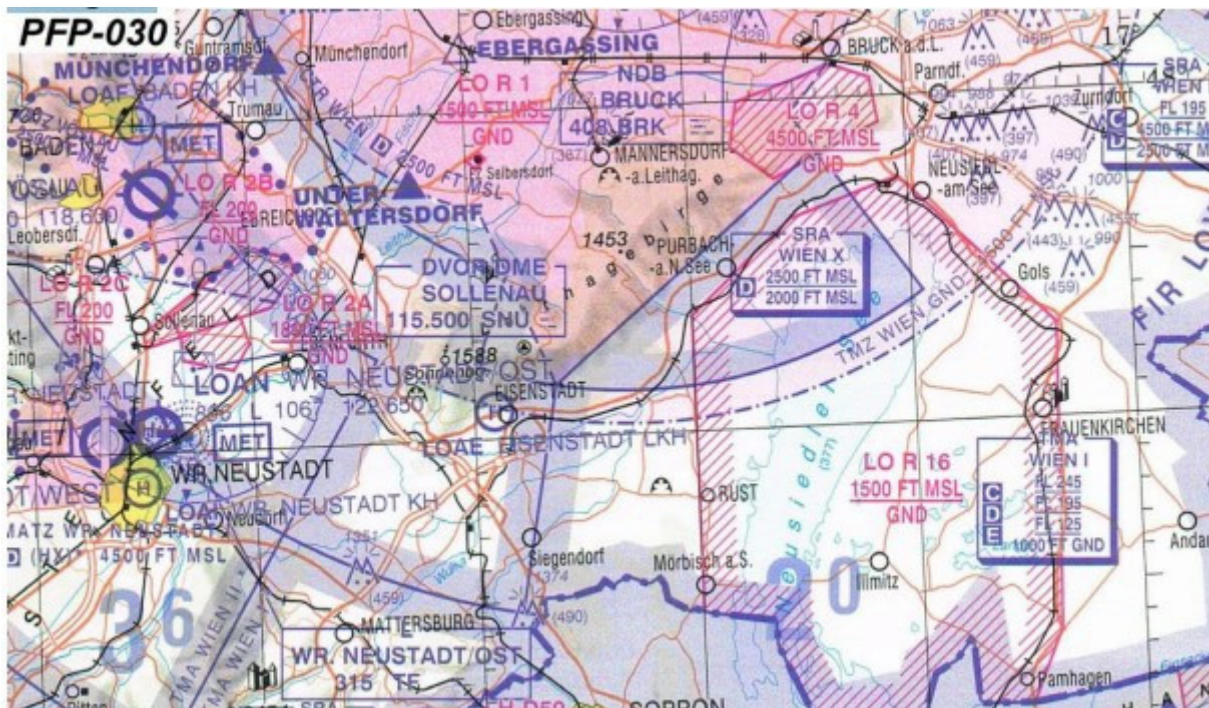


QuizVds.it

54. What is the mass of a "cube of air" with the edges 1 m long, at MSL according ISA?

- a) 0,01225 kg
- b) 0,1225 kg
- c) 12,25 kg
- d) 1,225 kg

55. The upper limit of LO R 4 equals... See annex (PFP-030) Siehe Anlage 2



- a) 1.500 ft AGL
- b) 4.500 ft AGL.
- c) 4.500 ft MSL
- d) 1.500 ft MSL.

56. Which of the mentioned cockpit instruments is connected to the pitot tube?

- a) Direct-reading compass
- b) Altimeter
- c) Vertical speed indicator
- d) Airspeed indicator

Exam simulation

SPL - Sailplane Pilot License - Air Law



QuizVds.it

57. Which transponder code indicates a radio failure?

- a) 7500
- b) 7700
- c) 7000
- d) 7600

58. How can you obtain meteorological information concerning airports during a crosscountry flight?

- a) GAMET
- b) METAR
- c) AIRMET
- d) VOLMET

59. Which answer contains every state of water found in the atmosphere?

- a) Liquid, solid, and gaseous
- b) Liquid
- c) Gaseous and liquid
- d) Liquid and solid

60. During flight you have to solve a problem, how to you proceed?

- a) There is no time for solving problems during flight
- b) Solve problem immediately, otherwise refer to the operationg handbook
- c) Contact other pilot via radio for help, keep flying
- d) Primarily fly the airplane and keep it stable, then attend to the problem and keep flying the airplane

61. What is the correct way to transmit the call sign HB-YKM?

- a) Hotel Bravo Yuliett Kilo Mikro
- b) Home Bravo Yuliett Kilo Mike
- c) Hotel Bravo Yankee Kilo Mike
- d) Home Bravo Yankee Kilo Mikro

Exam simulation

SPL - Sailplane Pilot License - Air Law



QuizVds.it

62. What is the difference between spin and spiral dive?

- a) Spin: stall at inner wing, speed increasing rapidly; Spiral dive: airflow at both wings, speed constant
- b) Spin: stall at inner wing, speed constant; Spiral dive: airflow at both wings, speed increasing rapidly
- c) Spin: stall at outer wing, speed constant; Spiral dive: airflow at both wings, speed increasing rapidly
- d) Spin: stall at outer wing, speed increasing rapidly; Spiral dive: airflow at both wings, speed constant

63. What is the function of the blood platelets (thrombocytes)?

- a) Oxygen transport
- b) Blood sugar regulation
- c) Immune defense
- d) Blood coagulation

64. Lower-than-standard temperature may lead to...

- a) An altitude indication which is too high.
- b) An altitude indication which is too low.
- c) A correct altitude indication as long as the altimeter subscale is set to correct for non-standard temperature.
- d) A blockage of the Pitot tube by ice, freezing the altimeter indication to its present value.

65. In which situations should a pilot use blind transmissions?

- a) When a pilot has flown into cloud or fog unintentionally and therefore would like to request navigational assistance from a ground unit
- b) When the traffic situation at an airport allows the transmission of information which does not need to be acknowledged by the ground station
- c) When no radio communication can be established with the appropriate aeronautical station, but when evidence exists that transmissions are received at that ground unit
- d) When a transmission containing important navigational or technical information is to be sent to several stations at the same time

66. What is the meaning of the 1:60 rule?

- a) 6 NM lateral offset at 1° drift after 10 NM
- b) 1 NM lateral offset at 1° drift after 60 NM
- c) 10 NM lateral offset at 1° drift after 60 NM
- d) 60 NM lateral offset at 1° drift after 1 NM

Exam simulation

SPL - Sailplane Pilot License - Air Law



QuizVds.it

67. The thickness of the wing is defined as the distance between the lower and the upper side of the wing at the...

- a) Thinnest part of the wing.
- b) Most inner part of the wing.
- c) Thickest part of the wing.
- d) Most outer part of the wing

68. Which of the following options states a correct position report?

- a) DEABC reaching "N"
- b) DEABC, "N", 2500 ft
- c) DEABC over "N" in FL 2500 ft
- d) DEABC over "N" at 35

69. Information about maximum allowed airspeeds can be found where?

- a) Airspeed indicator, cockpit panel and AIP part ENR
- b) POH, approach chart, vertical speed indicator
- c) POH and posting in briefing room
- d) POH, Cockpit panel, airspeed indicator

70. After landing, you realize you lost your pen which might have fallen down in the cockpit of the sailplane. What has to be considered?

- a) Lighter, loose bodies in the fuselage can be considered uncritical
- b) Before next take-off, the cockpit has to be firmly inspected for loose bodies.
- c) A flight without a pen at hand is not permitted
- d) Succeeding pilots have to be informed about that

Exam simulation

SPL - Sailplane Pilot License - Air Law



QuizVds.it

Response Scheme

Compare your answers with the following diagram and mark your score!

01: B	02: B	03: B	04: D
05: D	06: A	07: A	08: C
09: C	10: B	11: D	12: D
13: B	14: C	15: B	16: B
17: B	18: D	19: D	20: D
21: B	22: A	23: D	24: C
25: A	26: B	27: A	28: B
29: D	30: B	31: C	32: B
33: D	34: C	35: B	36: D
37: C	38: D	39: A	40: C
41: A	42: D	43: B	44: A
45: B	46: A	47: D	48: D
49: D	50: A	51: B	52: B
53: D	54: D	55: C	56: D
57: D	58: D	59: A	60: D
61: C	62: B	63: D	64: A
65: C	66: B	67: C	68: B
69: D	70: B		

Exam simulation

SPL - Sailplane Pilot License - Air Law



QuizVds.it

Response form

Use this form to mark your answers

01: _____	02: _____	03: _____	04: _____
05: _____	06: _____	07: _____	08: _____
09: _____	10: _____	11: _____	12: _____
13: _____	14: _____	15: _____	16: _____
17: _____	18: _____	19: _____	20: _____
21: _____	22: _____	23: _____	24: _____
25: _____	26: _____	27: _____	28: _____
29: _____	30: _____	31: _____	32: _____
33: _____	34: _____	35: _____	36: _____
37: _____	38: _____	39: _____	40: _____
41: _____	42: _____	43: _____	44: _____
45: _____	46: _____	47: _____	48: _____
49: _____	50: _____	51: _____	52: _____
53: _____	54: _____	55: _____	56: _____
57: _____	58: _____	59: _____	60: _____
61: _____	62: _____	63: _____	64: _____
65: _____	66: _____	67: _____	68: _____
69: _____	70: _____		