

# Exam simulation

ATPL - Airline Transport Pilot license - VFR Communications



QuizVds.it

STUDENT NAME:

DATE AND TIME:

**01. A ground feature appears 30° to the left of the centre line of the CRT of an airborne weather radar. If the heading of the aircraft is 355° (M) and the magnetic variation is 15° East, the true bearing of the aircraft from the feature is:**

- a) 220°
- b) 310°
- c) 160°
- d) 130°

**02. Among the following, select the ATC unit in charge of controlling the traffic:**

- a) AFIS
- b) ATIS
- c) AIS
- d) Departure

**03. The fire extinguisher types which may be used on class A fires are: 1 - H<sub>2</sub>O<sub>2</sub> - CO<sub>2</sub> 3 - dry-chemical 4 - halon Which of the following combinations contains all of the correct statements?**

- a) 1 - 2 - 3 - 4
- b) 3 - 4
- c) 1
- d) 2 - 3 - 4

**04. Given: The take-off mass of an aircraft is 8470 kg Total fuel on board is 1600 kg including 450 kg reserve fuel and 29 kg of unusable fuel The traffic load is 770 kg What is the Zero Fuel Mass?**

- a) 6899 kg
- b) 6420 kg
- c) 6129 kg
- d) 6870 kg

# Exam simulation

ATPL - Airline Transport Pilot license - VFR Communications



QuizVds.it

**05. How does a receiver of the NAVSTAR/GPS satellite navigation system determine the elevation and azimuth data of a satellite relative to the location of the antenna?**

---

- a) The data is stored in the receiver together with the Pseudo Random Noise (PRN) code
- b) It calculates it by using Almanac data transmitted by the satellites
- c) The data is determined by the satellite and transmitted together with the navigation message
- d) 6

**06. When an aircraft station receives the call 'ALL STATIONS Stephenville RADAR, stop transmitting MAYDAY' it is requested:**

---

- a) Not to interfere with the distress communication.
- b) To leave the frequency in use.
- c) To assist Stephenville RADAR in handling the distress traffic.
- d) To continue normal communication on the frequency in use.

**07. An outside air temperature of -35°C is measured while cruising at FL 200. What is the temperature deviation from the ISA at this level?**

---

- a) 10°C warmer than IS
- b) 5°C warmer than IS
- c) 10°C colder than IS
- d) 5°C colder than IS

**08. With regard to the average influence of age on pilot performance, it may be said that age:**

---

- a) Sharply reduces performance without, however, affecting cognitive capabilities
- b) Has little impact when the pilot is able to compensate for it by his/her flight experience
- c) Increases in impact as speed of thought and memory deteriorate
- d) Has a major impact owing to the impairment of memory

**09. An aeroplane must be re-weighed at certain intervals. Where an operator uses 'fleet masses' and provided that changes have been correctly documented, this interval is**

---

- a) 9 years for each aeroplane.
- b) Whenever a major modification is carried out.
- c) Whenever the Certificate of Airworthiness is renewed.
- d) 4 years for each aeroplane.

# Exam simulation

ATPL - Airline Transport Pilot license - VFR Communications



QuizVds.it

**10. A pilot who smokes will lose some of his capacity to transport oxygen combined with hemoglobin. Which percentage of his total oxygen transportation capacity would he give away when he smokes one pack of cigarettes a day?**

---

- a) 5 - 8%
- b) 20 - 25%
- c) 12 - 18%
- d) 0.5 - 2%

**11. To indicate a temperature, a thermocouple requires:**

---

- a) Direct current
- b) Battery power
- c) Alternating current
- d) No power supply

**12. Who is responsible for providing an Operation Manual in accordance with OPS 1 Subpart P for the use and guidance of the operations personnel?**

---

- a) The owner of the aircraft.
- b) The aircraft producer.
- c) The national authority.
- d) The aircraft operator.

**13. When a battery is almost fully discharged there is a tendency for the:**

---

- a) Voltage to decrease under load.
- b) Electrolyte to "boil".
- c) Current produced to increase due to the reduced voltage.
- d) Voltage To Increase Due To The Current Available.

**14. With regard to the graph for the light twin aeroplane, will the accelerate and stop distance be achieved in a take-off where the brakes are released before take-off power is set?**

---

- a) No, the performance will be worse than in the chart
- b) It does not matter which take-off technique is being used
- c) Yes, the chart has been made for this situation
- d) Performance will be better than in the chart

# Exam simulation

ATPL - Airline Transport Pilot license - VFR Communications



QuizVds.it

**15. The aircraft has started a descent. Select the correct radiotelephony transmission:**

---

- a) LEAVING FL 200
- b) LEAVING LEVEL 200 FOR LEVEL 120
- c) LEAVING FL 200, DESCENDING TO FL 120
- d) STARTING DESCENT

**16. The actual 'Zero Fuel Mass' is equal to the:**

---

- a) Operating Mass plus all the traffic load.
- b) Basic Empty Mass plus the fuel loaded.
- c) Dry Operating Mass plus the traffic load.
- d) Actual Landing Mass plus trip fuel.

**17. In which frequency band do VOR transmitters operate?**

---

- a) SHF
- b) UHF
- c) EHF
- d) For position fixing they are all based on the WGS84 ellipsoid

**18. An aeroplane has the following flap positions: 0°, 15°, 30°, 45°. Slats can also be selected. Generally speaking, which selection provides the highest positive contribution to the CLMAX?**

---

- a) The slats from the retracted to the take-off position
- b) The flaps from 15° to 30°
- c) The flaps from 0° to 15°
- d) The flaps from 30° to 45°

**19. Daylight Saving Time (Summer Time):**

---

- a) Is used to extend the sunlight period in the evening.
- b) Is used in some countries.
- c) Is introduced by setting the standard time forward by one hour.
- d) All answers are correct.

# Exam simulation

ATPL - Airline Transport Pilot license - VFR Communications



QuizVds.it

**20. When excessively leaning the mixture for a better fuel economy, but still on the rich side of the peak EGT, the following engine parameter(s) may exceed their normal operating ranges:**

---

- a) Oil Temperature.
- b) Engine RPM.
- c) Manifold pressure.
- d) Cylinder head and exhaust gas temperature.

**21. What type of weather can usually be expected in a polar maritime air mass over central Europe in the daytime during summer?**

---

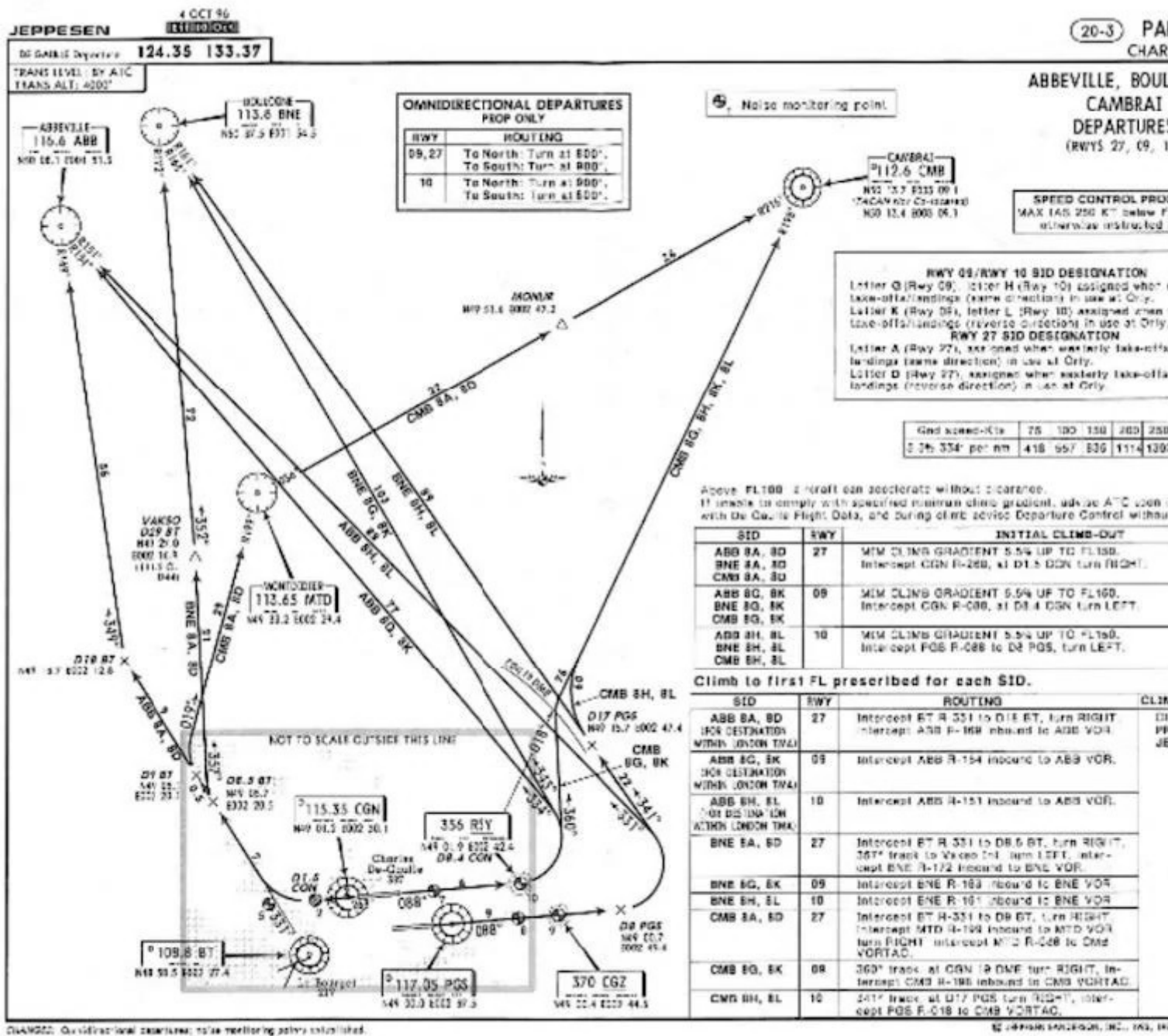
- a) Sky clear.
- b) Showers and good visibility.
- c) Drizzle and low stratus.
- d) Continuous rain and poor visibility.

ATPL - Airline Transport Pilot license - VFR Communications



QuizVds.it

**22. Refer to the Student Pilot Route Manual - PARIS CDG Plate 20-3: Planning an IFR-flight from Paris (Charles de Gaulle) to London. Given: Distance from PARIS Charles-de-Gaulle to top of climb 50 NM Determine the distance from the top of climb to London. ABB 116.6.**



- a) 24.5 NM  
b) 31 NM  
c) 36.5 NM  
d) 33 NM

# Exam simulation

ATPL - Airline Transport Pilot license - VFR Communications



QuizVds.it

**23. During an explosive decompression at flight level 370 (FL 370), your first action will be:**

---

- a) To warn the ATC
- b) To set the transponder to 7700
- c) To comfort your passengers
- d) To put on the oxygen mask

**24. When a pilot makes a turn in horizontal flight, the stall speed:**

---

- a) Decreases with increasing bank angle
- b) Increases with flap extension
- c) Increases with the load factor squared
- d) Increases with the square root of load factor

**25. On hearing an urgency message a pilot shall:**

---

- a) Acknowledge the message immediately
- b) Impose radio silence on the frequency in use
- c) Monitor the frequency to offer assistance if required
- d) Change the frequency, because radio silence will be imposed on the frequency in use

**26. Shuttle valves will automatically:**

---

- a) Guard Systems Against Over-pressure.
- b) Shut down systems which are overloaded.
- c) Reduce pump loads.
- d) Switch hydraulically operated units to the most appropriate pressure supply.

**27. During a deceleration phase at constant attitude, the control system of the artificial horizon results in the horizon bar indicating a**

---

- a) Nose down attitude.
- b) Nose up followed by a nose down attitude.
- c) Constant attitude.
- d) Nose up attitude.

# Exam simulation

ATPL - Airline Transport Pilot license - VFR Communications



QuizVds.it

**28. What is the approximate distance from A to B, given: Direct mercator chart with a scale of 1:200.000 at the Equator. Chart length from A to B, in the vicinity of the Equator = 11cm.**

---

- a) 12 NM
- b) 22 NM
- c) 14 NM
- d) 21 NM

**29. In the MAPPING MODE the airborne weather radar utilises a:**

---

- a) Pencil beam to a maximum range of 60 NM
- b) Fan shaped beam effective up to a range of 150 NM
- c) Pencil beam effective from zero to 150 NM
- d) Range from cloud, wavelength / frequency used

**30. During landing of a low-winged jet aeroplane, the greatest elevator up deflection is normally required when the flaps are:**

---

- a) Fully down and the cg is fully aft.
- b) Up and the cg is fully forward.
- c) Up and the cg is fully aft.
- d) Fully down and the cg is fully forward.

**31. A jet aeroplane is cruising at high altitude with a Mach-number, that provides a buffet margin of 0.3g incremental. In order to increase the buffet margin to 0.4g incremental the pilot must:**

---

- a) Extend the flaps to the first selection
- b) Fly at a higher Mach-number
- c) Fly at a lower altitude and the same Mach-number
- d) Fly at a larger angle of attack

**32. In the event of engine failure below V1, the first action to be taken by the pilot in order to decelerate the aeroplane is to:**

---

- a) Apply wheel brakes
- b) Reverse engine thrust
- c) Deploy airbrakes or spoilers
- d) Reduce the engine thrust



# Exam simulation

ATPL - Airline Transport Pilot license - VFR Communications



QuizVds.it

**33. With what type of cloud is heavy precipitation unlikely during the summer months ?**

---

- a) CB, ST
- b) NS, CC
- c) SC, AS
- d) AS, NS

**34. The empty mass of an aeroplane is given as 44800 kg. Operational items (including crew standard mass of 1060 kg) are 2300 kg. If the maximum zero fuel mass is given as 65500 kg, the maximum traffic load which could be carried is:**

---

- a) 23000 kg
- b) 20700 kg
- c) 19460 kg.
- d) 18400 kg

**35. When flying in cold air (colder than standard atmosphere), the altimeter will:**

---

- a) Underestimate
- b) Be just as correct as before
- c) Overestimate
- d) Show the actual height above ground

**36. What action is required by the pilot of an aircraft station if he/she is unable to establish radio contact with an aeronautical station ?**

---

- a) Try to establish communication with other aircraft or aeronautical stations
- b) Land at the nearest aerodrome appropriate to the route of flight
- c) Squawk mode A code 7500
- d) Divert to the alternate airport

**37. What is the main composition of clouds classified as 'high level clouds'?**

---

- a) Supercooled water droplets.
- b) Ice crystals.
- c) Water vapour.
- d) Water droplets.

# Exam simulation

ATPL - Airline Transport Pilot license - VFR Communications



QuizVds.it

## 38. Induced drag may be reduced by:

---

- a) An increase in the taper ratio of the wing
- b) A decrease of the aspect ratio
- c) An increase in aspect ratio
- d) The use of a wing tip with a much thinner aerofoil

## 39. An aircraft is flying at MACH 0.84 at FL 330. The static air temperature is -48°C and the headwind component 52 Kt. At 1338 UTC the controller requests the pilot to cross the meridian of 030W at 1500 UTC. Given the distance to go is 570 NM, the reduced MACH No. should be:

---

- a) 0.76
- b) 0.78
- c) Given the distance to go is 570 NM, the reduced MACH No. should be: 0.76 0.78 0.72
- d) 0.80

## 40. When suffering from Hypoxia short-term memory impairment starts at approximately at:

---

- a) 10,000 ft
- b) 18,000 ft
- c) 12,000 ft
- d) 25,000 ft

## 41. An aeroplane is carrying a traffic load of 10320 kg Complete the necessary sections of the attached appendix and determine which of the answers given below represents the maximum increase in the traffic load

---

- a) 7000 kg
- b) 8268 kg
- c) 1830 kg
- d) 655 kg[see Annex]

## 42. The time is 9:20

---

- a) M. What is the correct way of transmitting this time if there is no possibility of confusion about the hour? Twenty.
- b) Two zero this hour.
- c) Two zero.
- d) Nine twenty M.

# Exam simulation

ATPL - Airline Transport Pilot license - VFR Communications



QuizVds.it

---

**43. Which statement, in relation to the climb limited takeoff mass of a jet aeroplane, is correct?**

---

- a) The climb limited takeoff mass is determined at the speed for best rate of climb
- b) The climb limited takeoff mass decreases with increasing OAT
- c) On high elevation airports equipped with long runways the aeroplane will always be climb limited
- d) 50% of a head wind is taken into account when determining the climb limited takeoff mass

---

**44. When letters are used for registration mark combinations shall not be used which might be confused with urgent signals for example**

---

- a) LLL
- b) RCC
- c) DDD
- d) PAN

---

**45. To fight a fire in an air-conditioned cargo hold:**

---

- a) Extinguish fire only.
- b) Extinguish fire and reduce air conditioning.
- c) Fire-fighting is not necessary, since the transport of combustible goods in an air-conditioned cargo hold is forbidden.
- d) You turn off the cargo hold ventilation and extinguish fire.

---

**46. Isolated thunderstorms of a local nature are generally caused by**

---

- a) Frontal lifting (warm front).
- b) Thermal triggering.
- c) Frontal occlusion.
- d) Frontal lifting (cold front).

---

**47. The sleep cycles repeat during the course of a night's sleep.1. Each succeeding cycle contains a greater amount of REM-sleep.2. Frequent interruption of the REM-sleep may be harmful.**

---

- a) 1 and 2 are both correct
- b) 1 and 2 are both not correct
- c) 1 is not correct 2 is correct
- d) 1 is correct 2 is not correct

# Exam simulation

ATPL - Airline Transport Pilot license - VFR Communications



QuizVds.it

**48. AIP SIGMET information can be found in which part of the AIP?**

---

- a) AD
- b) ENR
- c) MET
- d) GEN

**49. When has the centre of gravity to be computed?**

---

- a) At least every four years
- b) After every 400-hrs inspection
- c) During every yearly inspection
- d) Prior to every flight

**50. Which of the following is obligating for members of ICAO?**

---

- a) ICAO shall approve the pricing of tickets on international airline connections
- b) ICAO must be informed about differences from the standards in any of the Annexes to the convention
- c) ICAO must be informed about new flight crew licenses and any suspended validity of such licenses
- d) ICAO must be informed about changes in the national regulations

# Exam simulation

ATPL - Airline Transport Pilot license - VFR Communications



QuizVds.it

**51. Refer to the General Student Pilot Route Manual - VFR Chart ED-4 Which navigation aid is located in position 48°30'N, 007°34'E?**



- a) NDB
- b) VOR/DME
- c) TACAN
- d) VOR

**52. What does the word 'cancel' mean?**

- a) A change has been made to your last clearance
- b) Wait and I will call you
- c) Annul the previously transmitted clearance
- d) Consider that transmission as not sent

# Exam simulation

ATPL - Airline Transport Pilot license - VFR Communications



QuizVds.it

**53. What type of satellite navigation system NAVSTAR/GPS receiver is most suitable for use on board an aircraft?**

---

- a) Multiplex
- b) Sequential
- c) Any hand held type
- d) Multichannel

**54. Select the air traffic service in charge of control of local traffic, take-offs and landings at an airport.**

---

- a) Control
- b) Radar
- c) Air Traffic Centre
- d) Tower

**55. A Lambert conformal conic projection, with two standard parallels:**

---

- a) Shows all great circles as straight lines
- b) The scale is only correct along the standard parallels
- c) Shows lines of longitude as parallel straight lines
- d) The scale is only correct at parallel of origin

**56. Absolute pressure is:**

---

- a) The amount the pressure has been raised with reference to an initial level.
- b) The difference between two pressures.
- c) Pressure in a confined area.
- d) Measured from zero pressure (vacuum).

**57. The distance between a NAVSTAR/GPS satellite and receiver is:**

---

- a) Determined by the time taken for the signal to arrive from the satellite multiplied by the speed of light
- b) Determined by the phase shift of the Pseudo Random Noise code multiplied by the speed of light
- c) Calculated, using the WGS-84 reference system, from the known positions of the satellite and the receiver
- d) 4

# Exam simulation

ATPL - Airline Transport Pilot license - VFR Communications



QuizVds.it

58. Given are the following information at

take-off \_\_\_\_\_ STATION.....MASS  
(kg)....ARM (cm)....MOMENT (kgcm) \_\_\_\_\_ Basic  
Empty Condition...12045.....+30.....+361350Crew.....145.....-160.....-23200Freight (1).....570.....+200.....+114000Freight (2).....410.....-40.....-16400Fuel.....6045.....-8.....-48360  
Given that the flight time is 2 h and the estimated fuel flow will be 1050 litres per h. The specific density of fuel is 0.79. The 'Freight ( 2)' will be dropped during flight within the scope of a rescue action. Calculate the CG position at landing.

- a) 25 cm aft of datum
- b) 24.3 cm aft of datum
- c) 23.7 cm aft of datum
- d) 22 cm aft of datum

59. What is the radiotelephony call sign suffix for the aeronautical station indicating clearance delivery?

- a) CLEARANCE
- b) DELIVERY
- c) RADIO
- d) CLEARANCE DELIVERY

60. What is the correct call sign of Fastair 345 in the initial call to the aerodrome control tower and the approach control unit, if the aircraft has a maximum take-off weight of more than 136 tonnes:

- a) Fastair 345 heavy
- b) Fastair 345 widebody
- c) Fastair 345
- d) Heavy Fastair 345

61. When the air is passing through an expansion wave the static temperature will

- a) Increase.
- b) Stay constant.
- c) Decrease.
- d) Decrease and beyond a certain Mach number start increasing again.

# Exam simulation

ATPL - Airline Transport Pilot license - VFR Communications



QuizVds.it

**62. When preparing to carry out the weighing procedure on an aircraft, which of the following is not required?**

---

- a) Drain all chemical toilet fluid tanks.
- b) Drain all usable fuel.
- c) Removable passenger services equipment to be off-loaded.
- d) Drain all engine tank oil.

**63. Is there any difference between the vertical speed versus forward speed curves for two identical aeroplanes having different masses ? (assume zero thrust and wind)**

---

- a) Yes, the difference is that the heavier aeroplane will always glide a greater distance.
- b) No difference.
- c) Yes, the difference is that the lighter aeroplane will always glide a greater distance.
- d) Yes, the difference is that for a given angle of attack both the vertical and forward speeds of the heavier aeroplane will be larger.

**64. What is the maximum distance at which you may expect strong VHF reception over flat terrain at FL 140 ?**

---

- a) About 240 NM
- b) About 300 NM
- c) About 40 NM
- d) About 140 NM

**65. Given: Distance from departure to destination 340 NM True track 320W/V 160/40 TAS 110 kt What is the distance of the PET from the departure point?**

---

- a) 228 NM
- b) 112 NM
- c) 219 NM
- d) 121 NM

**66. Which of these statements about structural design are correct and incorrect? 1) In structural design, FAIL SAFE implies the structure will never fail. 2) In structural design, SAFE LIFE implies the structure will never fail during a declared time period or number of cycles.**

---

- a) 1) Is Correct, 2) Is Correct.
- b) 1) is correct, 2) is incorrect.
- c) 1) is incorrect, 2) is correct.
- d) 1) is incorrect, 2) is incorrect.



# Exam simulation

ATPL - Airline Transport Pilot license - VFR Communications



QuizVds.it

**67. During a category III automatic approach, the position signals in the vertical plane under 200 ft are based on:**

---

- a) An altimeter set to the QFE.
- b) A radio altimeter.
- c) An altimeter set to 1013 hPa.
- d) An altimeter set to the QNH.

**68. Assuming no compressibility effects, induced drag at constant IAS is affected by:**

---

- a) Aeroplane mass.
- b) Engine thrust.
- c) Altitude.
- d) Outside air temperature.

**69. A cumulonimbus cloud in the vicinity of an aeroplane can cause certain navigation systems to give false indications. This is particularly true of the:**

---

- a) Weather radar
- b) VOR
- c) DME
- d) Orbital plane and the Earth's axis

**70. Among the factors which affect visual acuity are:**

---

- a) Smoking, colour blindness and angular distance from the fovea
- b) Hypoxia, age and angular distance from the fovea
- c) Colour blindness, visibility and angular distance from the fovea
- d) Colour blindness, alcohol and amount of light available

# Exam simulation

ATPL - Airline Transport Pilot license - VFR Communications



QuizVds.it

## Response Scheme

Compare your answers with the following diagram and mark your score!

01: C	02: D	03: A	04: A
05: B	06: A	07: C	08: B
09: A	10: A	11: D	12: D
13: A	14: A	15: C	16: C
17: D	18: A	19: D	20: D
21: B	22: A	23: D	24: D
25: C	26: D	27: A	28: A
29: D	30: D	31: C	32: D
33: C	34: D	35: C	36: A
37: B	38: C	39: D	40: C
41: C	42: C	43: B	44: D
45: D	46: B	47: A	48: D
49: D	50: B	51: B	52: C
53: D	54: D	55: B	56: D
57: A	58: B	59: B	60: A
61: C	62: D	63: D	64: D
65: B	66: D	67: B	68: A
69: D	70: B		

# Exam simulation

ATPL - Airline Transport Pilot license - VFR Communications



QuizVds.it

## Response form

Use this form to mark your answers

01: _____	02: _____	03: _____	04: _____
05: _____	06: _____	07: _____	08: _____
09: _____	10: _____	11: _____	12: _____
13: _____	14: _____	15: _____	16: _____
17: _____	18: _____	19: _____	20: _____
21: _____	22: _____	23: _____	24: _____
25: _____	26: _____	27: _____	28: _____
29: _____	30: _____	31: _____	32: _____
33: _____	34: _____	35: _____	36: _____
37: _____	38: _____	39: _____	40: _____
41: _____	42: _____	43: _____	44: _____
45: _____	46: _____	47: _____	48: _____
49: _____	50: _____	51: _____	52: _____
53: _____	54: _____	55: _____	56: _____
57: _____	58: _____	59: _____	60: _____
61: _____	62: _____	63: _____	64: _____
65: _____	66: _____	67: _____	68: _____
69: _____	70: _____		